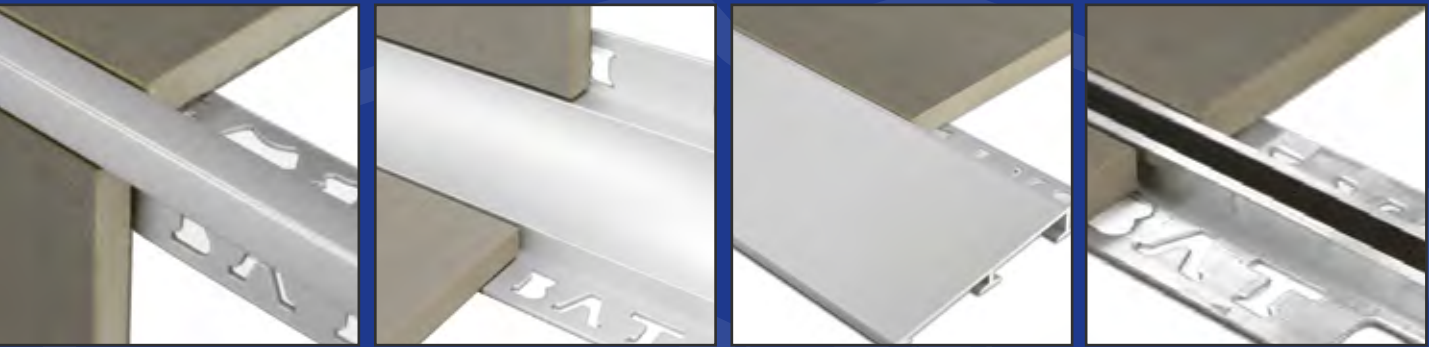


Trims Catalogue



2nd Edition



aluminium

Angle, Half Round, Flat, Geometric, Notched, Diminishing, Mosaic Corner, Decorative Trims, Expansion Joints & More

brass

Angle, Half Round, Flat, Geometric, Notched, Diminishing, Decorative Trims, Expansion Joints & More

pvc

*Trade Half Round
Combat Half Round
Expansion Joints*

stainless steel

Angle, Half Round, Flat, Geometric, Notched, External Corner, Expansion Joints & More

COMPANY PROFILE

B.A.T. TRIMS Pty. Ltd. has been serving the Tiling Industry for more than 25 years. This solely Australian owned and operated family business started from humble beginnings in a 180 m² factory/warehouse in 1985 in Dandenong, Victoria. To date B.A.T. TRIMS is recognised as the most innovative supplier of Tiling Trims, Tiling Tools, and Allied Accessories in Australia.

Our strategically placed Branch Offices and Warehouses in Melbourne (Head Office and Manufacturing), Sydney, Brisbane, Perth, Adelaide, Albury-Wodonga and Townsville allows us to service our customers fast and efficiently with readily available product ex-local warehouse stock.

Our vast range of quality products is constantly brought up to the latest standards and our already large range of Tiling Trims is regularly complimented with new innovative designs in line with current and future changes and demands within the Tiling and Building Industries. We are in constant close association with Architects and Interior Designers.

As our target market is traditionally the professional portion of the Tiling Industry, we have been very selective in our choice of business associates and suppliers in order to maintain the highest possible standards of quality products available. We are proud to say that we enjoy the trust and respect of many overseas and local companies / suppliers and manufacturers of which we have a very close relationship with, and in some cases an Exclusive Distributor arrangement.

To name a few:

· RAIMONDI · MARCRIST · REHAU · SIGMA · KAUFMANN · ATIKA ·

In addition to our “Standard” range of products, we have the facilities and expertise to manufacture (in Melbourne), special customised products such as rolled/curved tiling trims, expansion joints etc.

Our aim is to continue and improve our service to the Tiling Industry over the next 25 years and beyond.



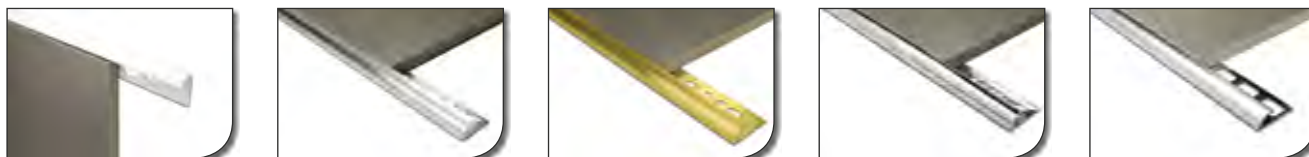
Perforated & Geometric Angle

3-7



Half Round Trim

8-11



Mosaic Corner Angle & Guard

12-16



Finishing & Decorative Trim

17-23



Diminishing Trim

24-26



Stairnosing & Cove Trim

27-30



Expansion Joint

31-36



Corners & End Caps

37-38



The B.A.T. Trims range consists of an array of different metals and plastics, thus extending into a wide variety of surface finishes.

Surface finish is largely dependent on the desired end appearance of the product, and the application, whether it be in a commercial environment where hard wearing and resilient finishes are required, or in a domestic or non-commercial environment where aesthetic appearance holds more importance.

Apart from B.A.T. Trims' trims being manufactured in the standard raw finishes of Aluminium, Brass, Stainless Steel and PVC, the following finishes are available.

- Polished
- Anodised
- Powder Coated
- Chrome Plated
- PVC Combat Coating

Polishing

Polishing metals is a process that is undertaken for both as a surface "finish" and also prior to other processes to ensure more consistent and better results.

A large option of appearances can be achieved, from various grades of finished/brushed through to a bright/reflective finish.

Anodising

Anodising is an electrochemical process that thickens and toughens the naturally occurring protective oxides in Aluminium surfaces.

Simply put, all Aluminium has a natural resistance to corrosion, by surface sealing itself during the corrosion process. Anodising utilises and accelerates this naturally occurring process under controlled conditions, toughening the surface seal into a corrosion resistant layer on the surface.

Depending on the level of protection required, the anodic layer can be varied in thickness - in effect, the thicker the layer, the greater the protection. Additionally, because anodising is a chemical process, it ensures an even coverage of all surfaces of the Aluminium, including corners whereas processes such as Powder Coating may not.

Anodic coatings are generally much stronger and more adherent than most types of paint and metal plating, but they are generally more brittle which makes them less likely to crack or peel from ageing and wear, but more susceptible to cracking from thermal stress.

Anodised surfaces are still susceptible to potential damage from both high and low pH chemicals, which results in stripping the coating and corrosion of the substrate.

The anodic coating, or anodised layer; although becoming part of the metal, has a porous structure which then allows secondary processes such as colouring or dyeing.

Powder Coating

Powder Coating is a painted finish which protects and decorates Aluminium. Powder is applied using electro-static spray equipment and then oven baked at approximately 210°C.

Powder Coating is a surface coating that completely covers the metallic appearance of the substrate. Powder Coating offers a vast range of colour options, whether you are complimenting or contrasting surrounding fittings.

Chrome Plating

Chrome is the shortened/slang word for Chromium, one of the naturally occurring chemical elements. It is a metal, however, as a stand alone metal, it is not a useful substance and not normally used in a pure form.

Chrome Plating is where Chromium is often used. This invariably means a thin plating/layer is applied to another substance. Typically, B.A.T. Trims products treated in this particular way are Brass.

It is not always easy to identify Chrome Plating from other finishes. Chrome Plating however is more reflective, less pale, and holds a deeper reflection - like a mirror.

Chrome is applied by electroplating and there are two different applications for Chrome Plating - Hard Chrome (Also known as industrial or engineered chrome) and Decorative Chrome (also known as Nickel-Chrome Plating).

Decorative Chrome is designed to be aesthetically pleasing and durable and this is the process used by B.A.T. Trims. A bright Nickel Plating layer is applied before the Chromium layer to provide a smooth finish and to increase corrosion resistance and reflectivity. The Nickel is what makes Chrome silver like in appearance. The Chromium layer is then applied and helps protect the Nickel and creates the luster that we all know as a "Chrome" finish.

PVC Combat Coating

PVC Combat™ Coating has been developed specifically for B.A.T. Trims. Combat™ has a superior high gloss finish, is UV stable and has IONPURE® Antimicrobial protection.

As illustrated in this catalogue, the B.A.T. Trims range of Tiling Trims is vast and covers an extensive amount of installation options.

Whether the tiling application is completed out of necessity, i.e: To comply with local requirement, or out of the desire to create a difference in a domestic scenario, the intended end result is an installation that looks both professional, and one that is appealing to the eye.

However, what sometimes begins as an installation that looks first class, can end up unsightly and embarrassing to the end user. Faulty workmanship and/or incorrect maintenance of the installation can spoil an otherwise faultless installation.

Although B.A.T. Trims are designed predominantly with the intention of “problem solving” and “dressing up” otherwise bland installations of both tile and other surface finishes, the surface finishes offered are mainly for decorative purpose only. Proper care must be taken in the maintenance of the trims both during installation, and additional preventative maintenance must also occur.

Proper Care During Installation

During the course of trim installation there are two critical points at which utmost care must be taken to avoid damage to the trim.

Cutting

Cutting of your tile trim should generally always be done with a hacksaw. Although still a relatively simple method, it must be taken into account that the use of trims within an installation is still fairly minimal as opposed to the number of tiles being installed. A hacksaw blade with between 28-32 teeth per inch will cut best. Do not use a diamond blade on non-ferrous metals. In most cases the speed of the diamond blade is too high and will result in molten metal clogging up the blade - not only shortening the life of the blade, but also giving an un-even and often unsightly cut.

Specific Circular saw blades are available for cutting Aluminium and specific stainless steel cut off wheels are also available. Care must be taken when using high speed cutting devices and/or grinding both for personal safety and the damage that may occur from heat or metal binding.

Grouting

Grouting of tiling works is quite obviously an integral part of any installation. However, some people are unaware that the incorrect application and washing up of grout can harm tiling trims within the installation.

Most grouts, being cement based, are alkaline in

nature. Alkaline substances left the tile trims for a prolonged period of time act as an “etch”, irreparably burning the surface of the trim.

Therefore, when grouting, **IMMEDIATELY** wipe away excess grout with a clean, damp sponge from the finished surface.

Preventative Maintenance & Care

It is essential that all surface finished trims are regularly maintained to preserve their finish for an extended period of time.

Although all the trims covered in this catalogue have a particular surface finish, and, those surfaces alone are generally resilient to damage, regular care and cleaning will help maintain not only the quality of the finish, but also the appearance.

Cleaning methods can quite often vary depending on the degree of contamination, however hand cleaning is always considered the best.

All surface finished trims should only be washed with warm, soapy water. Fibre brushes may be used to remove loose dirt and grime, however, abrasive such as emery and sand paper as well as nylon scouring pads should not be used.

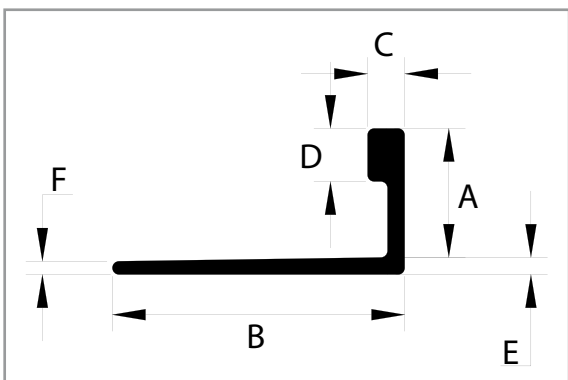
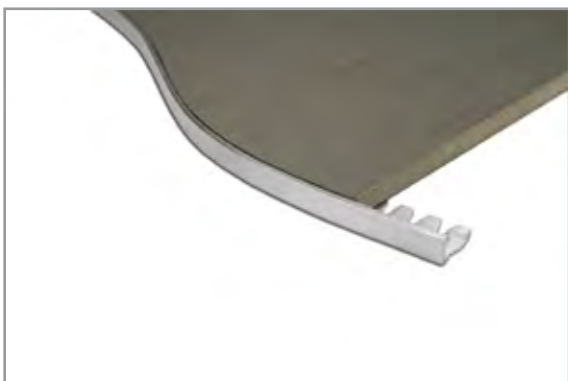
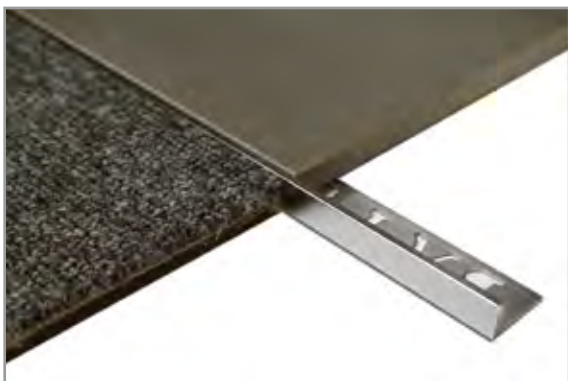
Additionally, acidic or alkaline cleaning agents are not recommended as they can damage the surface finish.

Where greasy or oily deposits are on the surface, white spirits (such as mineral turpentine) may be used in conjunction with a soft clean cloth.

No matter which cleaning method is employed, all cleaning should be concluded by washing/rinsing with fresh clean water.

If you are unsure of which method to use, please test in an inconspicuous area. Please contact B.A.T. Trims for further advice.





AA-(Size)-1

- Aluminium Angle**
- Mill Finish
 - 1m Length

AA-(Size)-3

- Aluminium Angle**
- Mill Finish
 - 3m Length

AA-(Size)-3-N

- Aluminium Angle - Notched**
- Notched - Mill Finish
 - 3m Length

AA-(Size)-3-(Colour)

- Aluminium Angle**
- Standard Colours Available (Refer Guide Below)
 - 3m Length

The purpose of Aluminium Angle is to provide protection of a tiled surface against chipping and wear.

As a more economical alternative to Brass or Stainless Steel, Aluminium is widely used, and has the flexibility of being able to be produced in a wide range of finishes / colours that can be utilised with various ceramic tiles and natural stones.

The Aluminium Angle can also be installed between two alternative types of flooring to create a border or decorative strip.

More recently, Aluminium Angle has been installed vertically to finish off tiling around doors, windows and walls where an adjoining wall is not being tiled.

Notching of the fixing leg is another option in instances where a protective edge trim is required to follow an intricate shape / curve.

(Size)	A (mm)	B (mm)	C (mm)	D (mm)	E (mm)	F (mm)
4	4.50	22.00	2.80	4.50	1.20	0.80
6	6.00	20.00	2.80	4.00	1.30	1.00
8	8.00	20.00	2.80	4.00	1.30	1.00
9	9.00	22.00	2.80	4.00	1.30	1.00
10	10.00	22.00	2.80	4.00	1.30	1.00
11	11.00	22.00	2.80	4.00	1.30	1.00
12	12.50	23.00	2.80	4.00	1.30	1.00
13	13.50	23.00	2.80	4.00	1.30	1.00
15	15.00	23.00	2.80	4.00	1.30	1.00
17	17.00	23.00	2.80	4.00	1.30	1.00
18	18.50	23.00	2.80	4.00	1.50	1.00
20	20.00	23.00	2.80	4.00	1.40	1.00
22	22.00	23.00	2.80	4.00	1.50	1.00

(Colour)

- Anodised**
- BS - Bright Silver
 - MS - Matt Silver
 - LS - Linished Silver (Only 8,10 & 12)
- Powdercoated**
- ALA - Alabaster
 - BK - Gloss Black
 - WH - Pearl White
- Custom**
- Other Anodised and Powdercoated colours are also available and quoted on request.

PLEASE NOTE: Care must be taken during and after installation of surface finished trims. Refer to pages 4 & 5 of this catalogue

NBA-(Size)-1

Brass Angle

- Mill Finish
- 1m Length

NBA-(Size)-3

Brass Angle

- Mill Finish
- 3m Length

NBA-(Size)-3-N

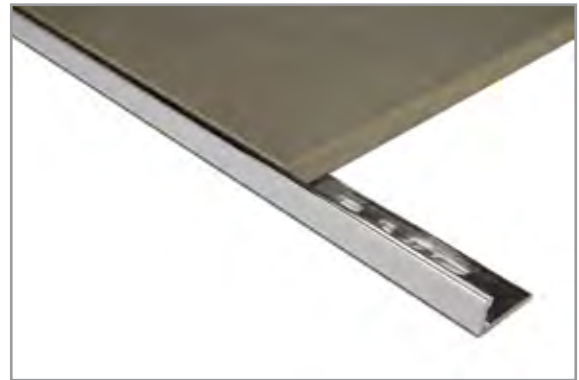
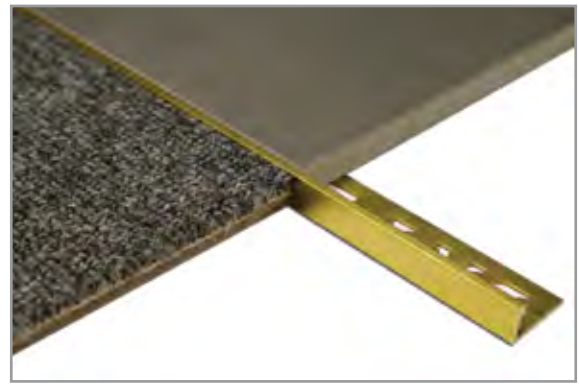
Brass Angle - Notched

- Notched - Mill Finish
- 3m Length

CPBA-(Size)-3

Brass Angle

- Chrome Plated
- 3m Length

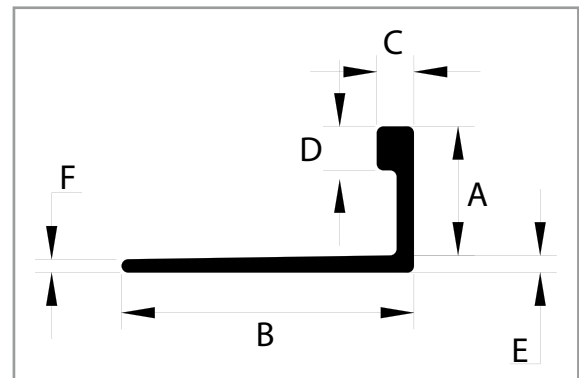


Brass is widely considered to be more durable, and more resilient in moderate to harsh installation environments, and it is naturally more resistant to chemicals that are commonly used during tile installation.

Brass Angles main purpose is to provide protection of a tiled surface against chipping and wear.

For a more decorative and prestigious look, B.A.T. Trims Brass Angles are also available in a Chrome Plated finish.

Notching of the fixing leg is another option in instances where a protective edge trim is required to follow an intricate shape / curve.



(Size)	A (mm)	B (mm)	C (mm)	D (mm)	E (mm)	F (mm)
4	4.50	22.00	2.80	3.20	1.20	1.00
6	6.00	22.00	2.80	3.20	1.20	0.80
8	8.00	22.00	3.00	3.20	1.20	0.80
9	9.00	22.00	2.80	3.20	1.20	1.00
10	10.00	22.00	3.00	3.20	1.20	0.80
11	11.00	22.00	2.80	3.20	1.20	1.00
12	12.50	22.00	2.80	3.20	1.20	1.00
13	13.50	22.00	3.00	3.20	1.20	1.00
15	15.00	22.00	2.80	3.20	1.20	1.00
16	16.50	22.00	2.80	3.20	1.20	1.00
18	18.50	22.00	2.80	3.20	1.20	1.00
20	20.00	22.00	2.80	3.20	1.20	1.00
22	22.00	22.00	2.80	3.20	1.20	1.00
23	23.50	22.00	2.80	3.20	1.20	1.00
25	25.00	22.00	2.80	3.20	1.20	1.00

PLEASE NOTE: Care must be taken during and after installation of surface finished trims. Refer to pages 4 & 5 of this catalogue





SSA-(Size)-3

Stainless Steel Angle - 304 Grade

- Mill Finish
- 3m Length

SSA-(Size)-3-N

Stainless Steel Angle - 304 Grade - Notched

- Notched - Mill Finish
- 3m Length

SSAMG-(Size)-25

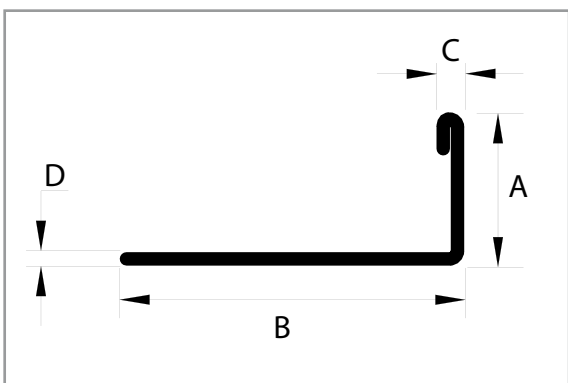
Stainless Steel Angle - 316 Grade

- Mill Finish
- 2.5m Length

SSAMG-(Size)-25-N

Stainless Steel Angle - 316 Grade - Notched

- Notched - Mill Finish
- 2.5m Length



	(Size)	A (mm)	B (mm)	C (mm)	D (mm)
SSA	3	3.00	24.00	1.70	0.80
	4	4.50	24.00	1.70	0.80
	6	6.00	24.00	1.70	0.80
	8	8.00	24.00	1.70	0.80
	10	10.00	24.00	1.70	0.80
	12	12.50	24.00	1.70	0.80
	15	15.00	24.00	1.70	0.80
SSAMG	8	8.00	24.00	1.70	0.80
	10	10.00	24.00	1.70	0.80
	12	12.50	24.00	1.70	0.80

The main purpose of Stainless Steel Angle is to provide protection of tiled surfaces against chipping and wear.

Although similar in purpose to both the Aluminium and Brass Angles, Stainless Steel is used in applications where far superior mechanical and chemical properties are required.

Stainless Steel is highly recommended in areas where strict sanitary requirements / regulations are in place (i.e: food preparation areas, hospitals, swimming pool areas etc.)

Stainless Steel Angle is available in two grades - Grade 304 which can be used extensively in domestic and some commercial environments, however it should be limited only to applications where exposure to water is intermittent, and Grade 316, which can be used in most environments where frequent exposure to water occur.

Important Information:

Stainless Steel is highly resistant to corrosion. However, dependant on the conditions, Stainless Steel will stain and/or discolour due to surface deposits and therefore is not maintenance free.

Surface contamination and the formation of deposits must be prevented.

Industrial and naturally occurring atmospheric conditions can produce deposits and the frequency of cleaning is dependant on the application. A simple rule is; "Clean the metal when it is dirty in order to restore its original appearance"

Never clean Stainless Steel with steel wool.

Marine Grade (316) is the most suited for corrosion resistance, but it still requires preventative maintenance. Chlorine and salt deposits will result in discolouration and possible surface pitting if left unattended.

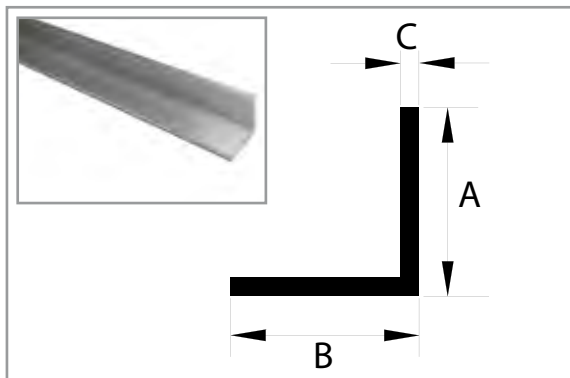
PLEASE NOTE: Care must be taken during and after installation of surface finished trims. Refer to pages 4 & 5 of this catalogue



AA-(Size)-3

Aluminium Geometric Angle

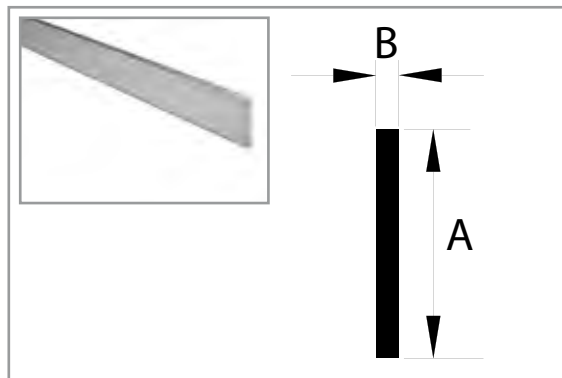
- Mill Finish
- 1.60 or 3.00mm Thick
- 3m Length



AF-(Size)-4

Aluminium Flat Bar

- Mill Finish
- 1.60 or 3.00mm Thick
- 4m Length



1.60mm

	A (mm)	B (mm)	C (mm)
AA-121216-3	12.00	12.00	1.60
AA-122016-3	12.00	20.00	1.60
AA-124016-3	12.00	40.00	1.60
AA-202016-3	20.00	20.00	1.60
AA-202516-3	20.00	25.00	1.60
AA-203216-3	20.00	32.00	1.60
AA-204016-3	20.00	40.00	1.60
AA-252516-3	25.00	25.00	1.60
AA-254016-3	25.00	40.00	1.60
AA-255016-3	25.00	50.00	1.60
AA-323216-3	32.00	32.00	1.60
AA-404016-3	40.00	40.00	1.60
AA-505016-3	50.00	50.00	1.60

1.60mm

	A (mm)	B (mm)
AF-1216-4	12.00	1.60
AF-2016-4	20.00	1.60
AF-2516-4	25.00	1.60

3.00mm

	A (mm)	B (mm)
AF-103-4	10.00	3.00
AF-123-4	12.00	3.00
AF-163-4	16.00	3.00
AF-203-4	20.00	3.00
AF-403-4	40.00	3.00

3.00mm

	A (mm)	B (mm)	C (mm)
AA-20203-3	20.00	20.00	3.00
AA-20253-3	20.00	25.00	3.00
AA-20323-3	20.00	32.00	3.00
AA-25253-3	25.00	25.00	3.00
AA-25323-3	25.00	32.00	3.00
AA-25403-3	25.00	40.00	3.00
AA-25503-3	25.00	50.00	3.00
AA-32323-3	32.00	32.00	3.00
AA-40403-3	40.00	40.00	3.00
AA-50503-3	50.00	50.00	3.00
AA-60603-3	60.00	60.00	3.00

Other Sizes of Geometric Angle and Flat Bar Are Available. Please Check With Your Local Warehouse.

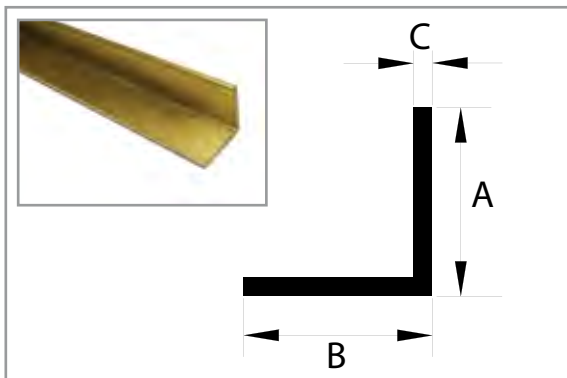
PLEASE NOTE: Care must be taken during and after installation of surface finished trims. Refer to pages 4 & 5 of this catalogue



BA-(Size)-3

Brass Geometric Angle

- Mill Finish
- 1.59 or 3.18mm Thick
- 3m Length



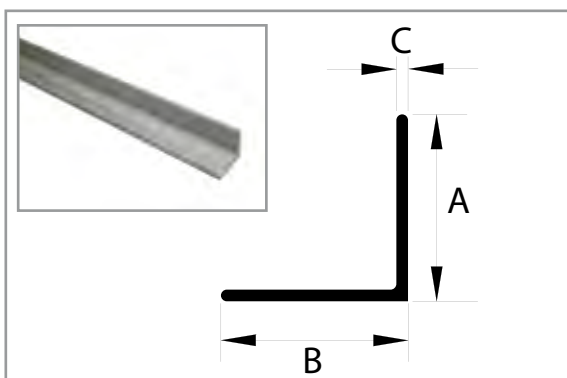
1.59mm	A (mm)	B (mm)	C (mm)
BA-1216-3	12.70	12.70	1.59
BA-1912-3	19.05	12.70	1.59
BA-1916-3	19.05	19.05	1.59
BA-201016-3	20.00	10.00	1.59
BA-252516-3	25.40	25.40	1.59

3.18mm	A (mm)	B (mm)	C (mm)
BA-25323-3	25.40	31.75	3.18
BA-25403-3	25.40	40.00	3.18
BA-3132-3	31.75	31.75	3.18
BA-3832-3	38.10	38.10	3.18
BA-5050-3	50.80	50.80	3.18

Other Sizes of Brass Geometric Angle and Flat Bar May Be Available. Please Check With Your Local Warehouse.

SS-(Size)-3

- *Stainless Steel Angle*
- Mill Finish
- 3.00, 5.00, 6.00 or 10.00mm Thick
- 3m Length



3.00mm	A (mm)	B (mm)	C (mm)
SSA-203-3	20.00	20.00	3.00
SSA-253-3	25.00	25.00	3.00
SSA-303-3	30.00	30.00	3.00
SSA-403-3	40.00	40.00	3.00
SSA-503-3	50.00	50.00	3.00

5.00mm	A (mm)	B (mm)	C (mm)
SSA-255-3	25.00	25.00	5.00
SSA-305-3	30.00	30.00	5.00
SSA-405-3	40.00	40.00	5.00
SSA-505-3	50.00	50.00	5.00

6.00mm	A (mm)	B (mm)	C (mm)
SSA-256-3	25.00	25.00	6.00
SSA-406-3	40.00	40.00	6.00
SSA-506-3	50.00	50.00	6.00
SSA-656-3	65.00	65.00	6.00
SSA-756-3	75.00	75.00	6.00
SSA-1006-3	100.00	100.00	6.00

10.00mm	A (mm)	B (mm)	C (mm)
SSA-7510-3	75.00	75.00	10.00
SSA-10010-3	100.00	100.00	10.00

Geometric Stainless Steel is Mill Finish.

Mechanical/Abrasive Treatment is Required if Other Finishes are Specified.

Mill Finish is HRAP (Hot Rolled, Annealed & Pickled, and also known as No. 1 Finish).

Various Options are Available, With Two Common Options.

No. 4 - Linished "Brushed Look"

No. 8 - Polished

Any Requirement for Surface Finishing Will Also Require Specification of Faces/Sides to be Done.

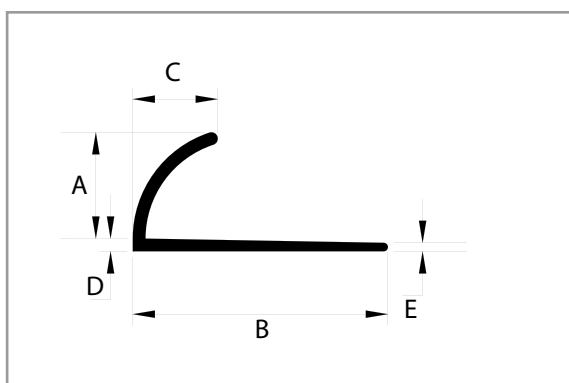
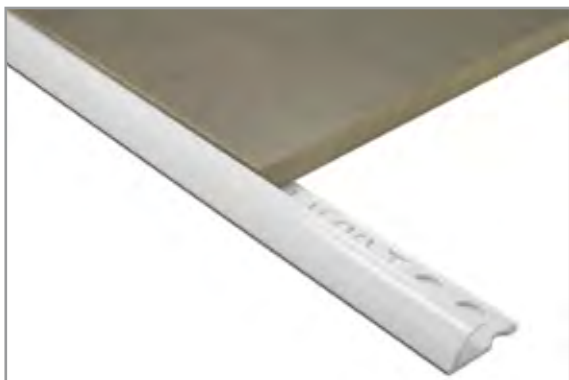
Other Sizes of Stainless Steel Geometric Angle and Flat Bar May Be Available. Please Check With Your Local Warehouse.

PLEASE NOTE: Care must be taken during and after installation of surface finished trims. Refer to pages 4 & 5 of this catalogue

PVCTQ-(Size)-(Colour)

PVC Half Round Trim - Trade Quality

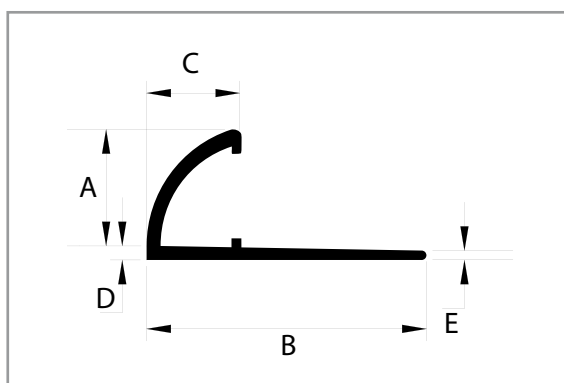
- Selected Colours Available (Refer Guide Below)
- 6, 8, 10 & 12mm
- 2.5m Length



PVCRE-(Size)-(Colour)

PVC Round Edge Trim - Combat

- Selected Colours Available (Refer Guide Below)
- 6, 8, 10 & 12mm
- 3.0m Length



PVC Trim is designed for customers that are both price conscious, and those wanting to colour match tiling installations closer to the type of tile and/or grout colours being installed.

B.A.T. Trims offers two different styles of PVC.

Trade Quality - Basic colour range, high quality trim

Combat - Antimicrobial - UV Stable - Superior Gloss. Large colour range combined with the ultimate quality & finish.

(Colour)

Trade Quality

- WH - White
- VAN - Vanilla

Combat

- BLK - Black
- BUF - Buff
- GUN - Gunmetal
- IVO - Ivory
- LGR - Light Grey
- MOC - Mocha
- VAN - Vanilla
- WH - White

(Size) A (mm) B (mm) C (mm) D (mm) E (mm)

Trade Quality

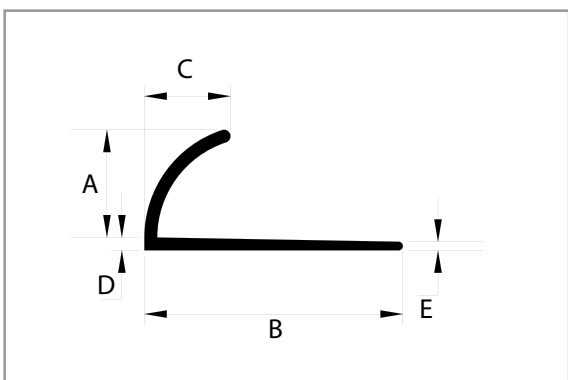
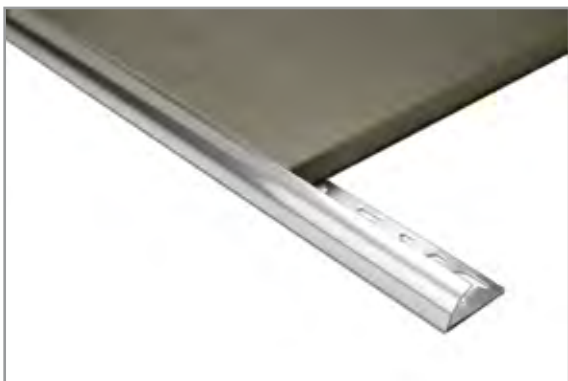
6	6.00	22.00	7.00	1.20	1.00
8	8.00	22.00	6.00	1.20	1.00
10	10.00	24.00	8.00	1.20	1.00
12	12.00	27.50	10.00	1.20	1.00

Combat

6	6.00	22.00	6.00	1.20	1.20
8	8.00	22.00	8.00	1.20	1.20
10	10.00	24.00	10.00	1.20	1.20
12	12.00	27.50	12.00	1.20	1.20

PLEASE NOTE: Care must be taken during and after installation of surface finished trims. Refer to pages 4 & 5 of this catalogue





(Size)	A (mm)	B (mm)	C (mm)	D (mm)	E (mm)
6	6.00	22.00	6.00	1.20	0.80
8	8.00	22.00	6.00	1.20	0.80
10	10.00	24.00	8.00	1.20	0.80
12	12.00	27.50	10.00	1.20	0.80

Custom

Other Anodised and Powdercoated colours are also available and quoted on request.

HRT-(Size)-3MF

Aluminium Half Round

- Mill Finish
- 3m Length

HRT-(Size)-3(Colour)

Aluminium Half Round

- Standard Colours Available (Refer Guide Below)
- 3m Length

The B.A.T. Trims Half Round could be considered as the most versatile trim in the entire range.

It is versatile in the respect that it can be installed horizontally; to give a smooth edge to tiled bath-hobs or benchtops, or alternatively vertically to facilitate a round edge on wall junctions where both sides are tiled.

Half Round Trim can also be used as a form of “capping” to finish off wall tile installations that are not fully tiled.

(Colour)

Mill Finish

MF - Mill Finish

Anodised

BS - Bright Silver

MS - Matt Silver

LS - Linished Silver (Only 8,10 & 12)

Powdercoated

ALA - Alabaster

BK - Gloss Black

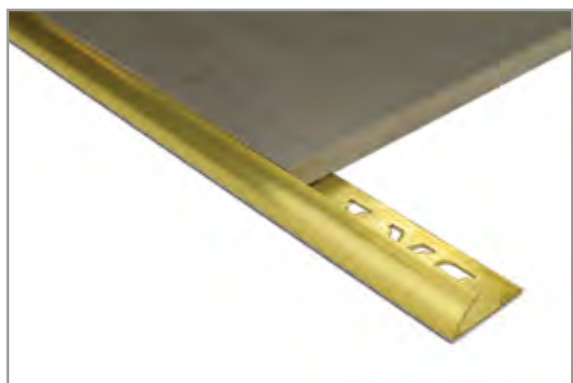
WH - Pearl White

PLEASE NOTE: Care must be taken during and after installation of surface finished trims. Refer to pages 4 & 5 of this catalogue

HRT-(Size)-B

Brass Half Round

- Mill Finish
- 2.5m Length



CPHRT-(Size)

Brass Half Round

- Chrome Plated
- 2.5m Length



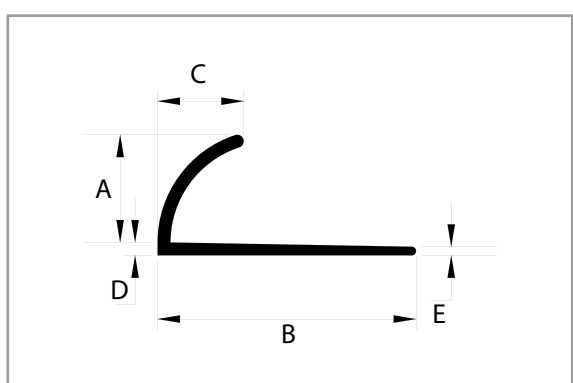
The B.A.T. Trims Half Round could be considered as the most versatile trim in the entire range.

Apart from being the most versatile type of trim on the market, the Half Round Trim is also available in Brass; widely considered to be the most durable of all metals.

Brass is naturally more resilient to harsh installation environments, and is more resistant to chemicals than its aluminium version.

In an effort to match and compliment existing chrome tap ware, the Brass Half Round Trim is also available in a chrome plated finish.

The variety of available trims and finishes within the B.A.T. Trims collection are designed to encourage specifiers and tiling contractors to consider tiling trim as being both decorative and functional.



(Size)	A (mm)	B (mm)	C (mm)	D (mm)	E (mm)
6	6.00	26.00	6.00	1.20	0.80
8	8.00	26.00	6.00	1.20	0.80
10	10.00	28.00	8.00	1.20	0.80
12	12.00	30.00	10.00	1.20	0.80

PLEASE NOTE: Care must be taken during and after installation of surface finished trims. Refer to pages 4 & 5 of this catalogue





SSHRT-(Size)-25

Stainless Steel Half Round - 304 Grade

- Mill Finish
- 2.5m Length

SSHRTMG-(Size)-25

Stainless Steel Half Round - 316 Grade

- Mill Finish
- 2.5m Length

Stainless Steel Half Round is versatile in its application.

Although similar in purpose to both the Aluminium and Brass Half Round Trims, Stainless Steel is used in applications where far superior mechanical and chemical properties are required.

Stainless Steel is highly recommended in areas where strict sanitary requirements / regulations are in place (i.e: food preparation areas, hospitals, swimming pool areas etc.)

Stainless Steel Half Round is available in two grades - Grade 304 which can be used extensively in domestic and some commercial environments, however it should be limited only to applications where exposure to water is intermittent, and Grade 316, which can be used in most environments where frequent exposure to water occur.

Important Information:

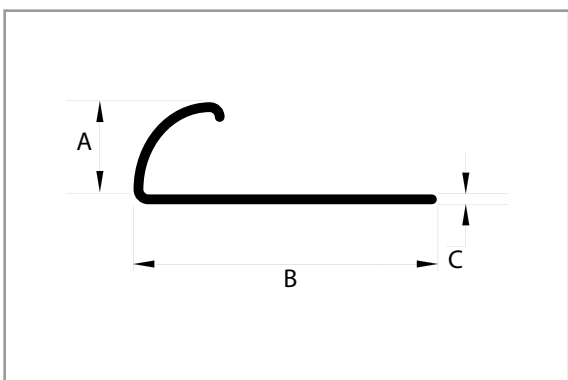
Stainless Steel is highly resistant to corrosion. However, dependant on the conditions, Stainless Steel will stain and/or discolour due to surface deposits and therefore is not maintenance free.

Surface contamination and the formation of deposits must be prevented.

Industrial and naturally occurring atmospheric conditions can produce deposits and the frequency of cleaning is dependant on the application. A simple rule is; "Clean the metal when it is dirty in order to restore its original appearance"

Never clean Stainless Steel with steel wool.

Marine Grade (316) is the most suited for corrosion resistance, but it still requires preventative maintenance. Chlorine and salt deposits will result in discolouration and possible surface pitting if left unattended.



(Size)	A (mm)	B (mm)	C (mm)
6	6.00	27.00	0.80
8	8.00	29.00	0.80
10	10.00	31.00	0.80
12	12.50	33.00	0.80

PLEASE NOTE: Care must be taken during and after installation of surface finished trims. Refer to pages 4 & 5 of this catalogue

PVCSQ-(Size)-(Colour)

PVC Square Edge - Combat

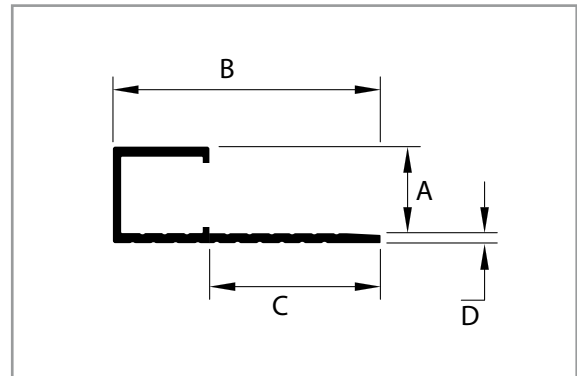
- Selected Colours Available (Refer Guide Below)
- 8, 10 & 12mm
- 3.0m Length

PVC Square Edge joins the family of the Mosaic Corner Angle.

The PVC profile offers a an alternative finish to metal profiles.

Much like the metal Mosaic Corner Angles, this profile is also able to be installed where two different thicknesses of materials are being installed.

Combat - Antimicrobial - UV Stable - Superior Gloss. Selected colour range combined with the ultimate quality & finish.



(Colour)

BLK - Black

WH - White

(Size)

(Size)	A (mm)	B (mm)	C (mm)	D (mm)
8	8.00	26.50	17.00	1.50
10	10.00	28.50	17.00	1.50
12	12.00	30.50	17.00	1.50

PLEASE NOTE: Care must be taken during and after installation of surface finished trims. Refer to pages 4 & 5 of this catalogue



MCA-(Size)-3-MF

Mosaic Corner Angle - Aluminium

- Mill Finish
- 3m Length

MCA-(Size)-3-(Colour)

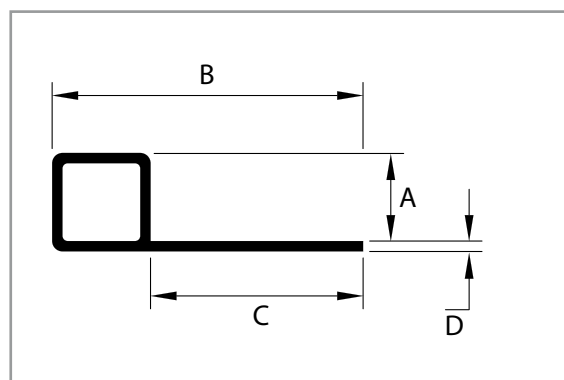
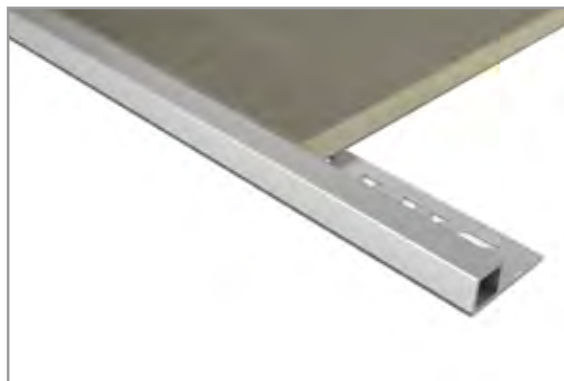
Mosaic Corner Angle - Aluminium

- Standard Colours Available (Refer Guide Below)
- 3m Length

B.A.T. Trims MCA (Mosaic Corner Angle) was developed in conjunction with designers and architects for the requirement of a square edge finish.

For corners where only one side, or two sides that feature materials of different thickness, the B.A.T. Mosaic Corner Angle is the perfect solution. Where only one side of the angle is a fixed size, the other side can be varied from flush to up to approximately 15mm, as required.

Pre-formed and coloured corners are readily available for the 8, 10 and 12 Mosaic Corner Angle and Guard



13



(Colour)

Mill Finish

MF - Mill Finish

Anodised

BS - Bright Silver

MS - Matt Silver

LS - Linished Silver (Only 8,10 & 12)

Powdercoated

ALA - Alabaster

BK - Gloss Black

WH - Pearl White

(Size)	A (mm)	B (mm)	C (mm)	D (mm)
4	4.50	25.50	20.00	1.00
6	6.50	27.50	20.00	1.00
8	8.50	30.00	20.50	1.00
10	10.50	32.00	20.50	1.00
12	12.50	34.00	20.50	1.00
15	15.00	36.00	21.00	1.00

Custom

Other Anodised and Powdercoated colours are also available and quoted on request.

PLEASE NOTE: Care must be taken during and after installation of surface finished trims. Refer to pages 4 & 5 of this catalogue



BCA-(Size)-3

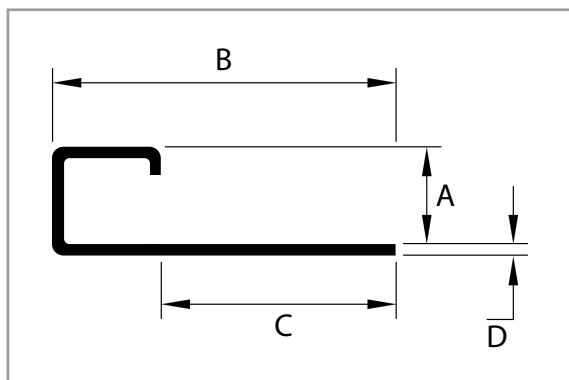
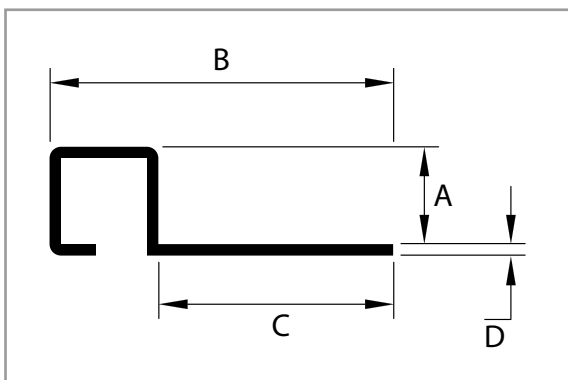
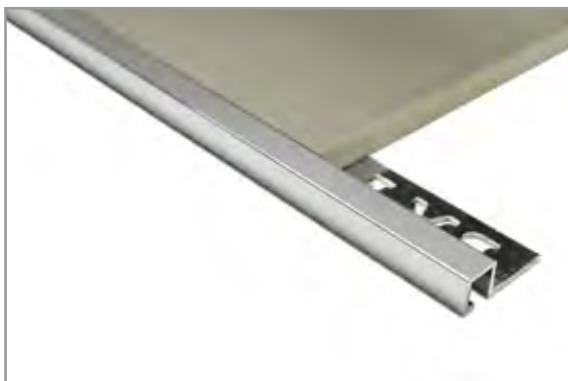
- Brass Corner Angle**
- Mill Finish
 - 8, 10 & 12mm
 - 3m Length

SSCA-(Size)-27P

- Stainless Steel Corner Angle - Grade 304**
- No. 8 Polished Finish
 - 8, 10 & 12mm
 - 2.7m Length

CPBCA-(Size)-3

- Chrome Plated Brass Corner Angle**
- Chrome Plated
 - 8, 10 & 12mm
 - 3m Length



	(Size)	A (mm)	B (mm)	C (mm)	D (mm)
BCA/CPBCA	8	8.00	31.30	22.00	1.30
	10	10.00	33.30	22.00	1.30
	12	12.50	35.80	22.00	1.30
SSCA	8	8.00	33.00	24.00	0.80
	10	10.00	33.00	22.00	0.80
	12	12.00	35.00	22.00	0.80

Further to the finish of the Mosaic Corner Angle, comes the addition of the Corner Angle profile in both Chrome Plated Brass, as well as Stainless Steel.

The Chrome Plated Brass and Stainless Steel profiles offer a high-end finish in areas where either a more suitably matched finish to tapware is desired, or a specialised finish is actually required.

Much like the Aluminium Mosaic Corner Angle, these profiles are also able to be installed where two different thicknesses of materials are being installed.

PLEASE NOTE: Care must be taken during and after installation of surface finished trims. Refer to pages 4 & 5 of this catalogue



MCG-(Size)-3-MF

Mosaic Corner Guard - Aluminium

- Mill Finish
- 3m Length

MCG-(Size)-3-(Colour)

Mosaic Corner Guard - Aluminium

- Standard Colours Available (Refer Guide Below)
- 3m Length

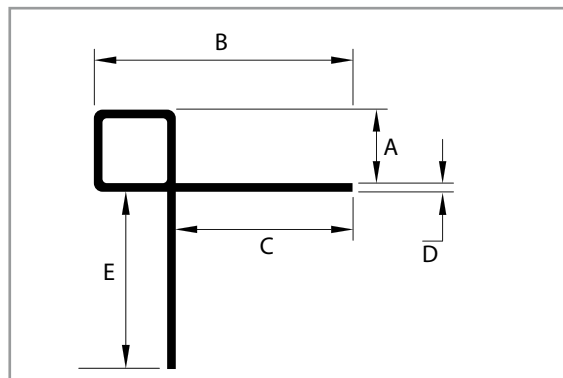


B.A.T. Trims MCG (Mosaic Corner Guard) was developed in conjunction with designers and architects for the requirement of a square edge finish.

The Mosaic Corner Guard is suitable for installation with most wall coverings including vinyl, laminate, glass mosaic, ceramic tiles, timber, etc.

Pre-formed and coloured corners are readily available for the 8, 10 and 12 Mosaic Corner Angle and Guard

15



(Colour)

Mill Finish

MF - Mill Finish

Anodised

BS - Bright Silver

MS - Matt Silver

Powdercoated

ALA - Alabaster

BK - Gloss Black

WH - Pearl White

(Size)

(Size)	A (mm)	B (mm)	C (mm)	D (mm)	E (mm)
4	4.50	25.50	20.00	1.00	20.00
6	6.50	27.50	20.00	1.00	20.00
8	8.50	30.00	20.50	1.00	20.50
10	10.50	32.00	20.50	1.00	20.50
12	12.50	34.00	20.50	1.00	20.50
15	15.00	36.00	20.00	1.00	20.00

Custom

Other Anodised and Powdercoated colours are also available and quoted on request.

PLEASE NOTE: Care must be taken during and after installation of surface finished trims. Refer to pages 4 & 5 of this catalogue





SSCG-(Size)-25

Stainless Steel Corner Guard - Grade 304

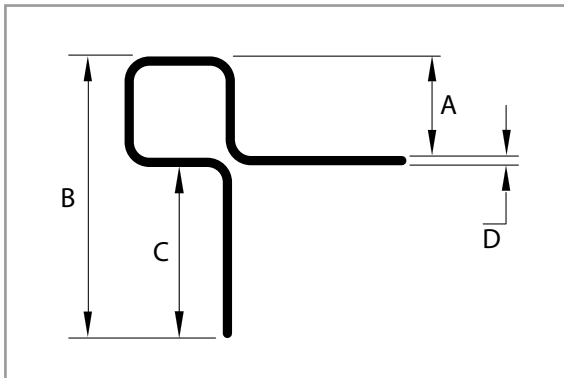
- 8, 10 & 12mm
- 2.5m Length

The Stainless Steel Corner Guard provides a square finish at 90 degrees either horizontally or vertically, mainly in commercial applications.

It is able to be installed with most wall coverings, and provides a 90 degree finish in areas where materials of equal thickness are being installed.

While of similar design to the Mosaic Corner Guard, the Stainless Steel Corner Guard is a rolled finish as opposed to extruded, which offers a slight radius to the external corner.

Comprising of Grade 304 Stainless Steel, it is harder wearing than Aluminium and is supplied as a natural finish and offers some protection to corrosive elements.



(Size)	A (mm)	B (mm)	C (mm)	D (mm)
8	8.00	29.80	21.00	0.80
10	10.00	33.80	23.00	0.80
12	12.00	37.80	25.00	0.80

SSCG

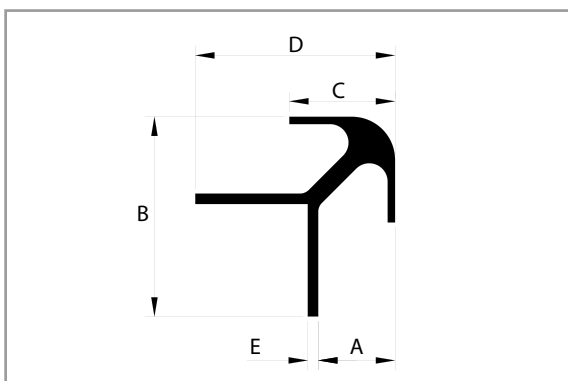
PLEASE NOTE: Care must be taken during and after installation of surface finished trims. Refer to pages 4 & 5 of this catalogue



BEC-(Size)-3-(Colour)

External Corner - Aluminium

- Selected Colours Available (Refer Guide Below)
- 6, 8, 10 & 12mm
- 3.0m Length



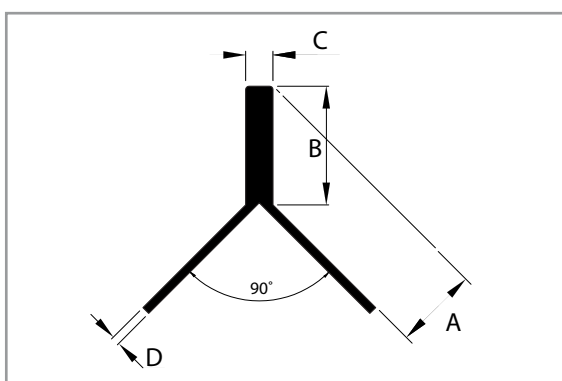
The B.A.T. Trims External Corner provides a rounded finish where tiles join at a 90° angle, either horizontally or vertically, such as bath hobs, or columns in a commercial application.

Tiles can be installed in two different ways that utilise the External Corner - either with tiles level with the top of the finished profile or tucked under to conceal the cut edge.

BDY-(Size)-3-MS

Decorative Y Section - Aluminium

- Matt Silver Finish Only
- 8, 10 & 12mm
- 3.0m Length



The B.A.T. Trims “Y” Section provides a protective edge to both vertical and horizontal 90° corners.

Please be aware that the **tiles must be mitred** in conjunction with the “Y” Section Trim.

(Colour)

Mill Finish

MF - Mill Finish

Anodised

BS - Bright Silver

MS - Matt Silver

Powdercoated

ALA - Alabaster

BK - Gloss Black

WH - Pearl White

(Size)

	(Size)	A (mm)	B (mm)	C (mm)	D (mm)	E (mm)
BEC	6	6.00	30.80	11.50	30.80	1.70
	8	8.00	29.00	13.50	29.00	1.70
	10	10.00	30.00	14.50	30.00	1.70
	12	12.50	32.50	17.20	32.50	1.70
BDY	8	10.30	14.57	4.00	1.20	
	10	12.30	17.39	4.00	1.20	
	12	14.30	20.22	4.00	1.20	

Custom

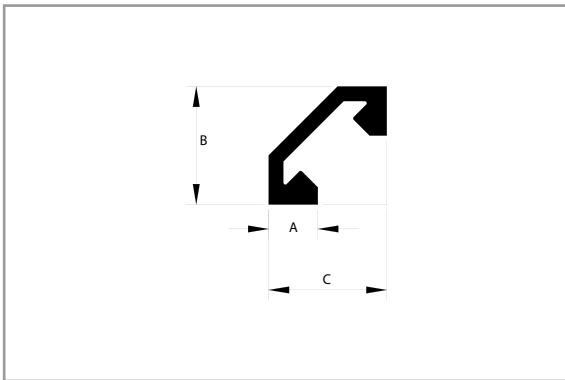
Other Anodised and Powdercoated colours are also available and quoted on request.

PLEASE NOTE: Care must be taken during and after installation of surface finished trims. Refer to pages 4 & 5 of this catalogue

UNI-3-(Colour)

Unicorn - Universal Corner

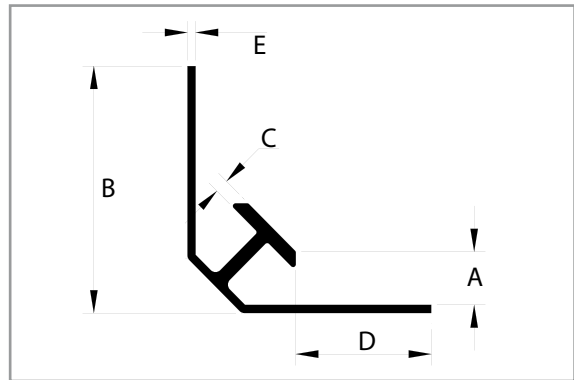
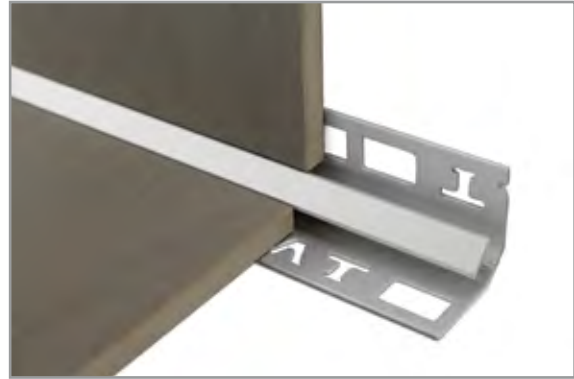
- Selected Colours Available (Refer Guide Below)
- One Size
- 3.0m Length



BIC-(Size)-3-(Colour)

Internal Corner

- Selected Colours Available (Refer Guide Below)
- 8 & 10
- 3.0m Length



The B.A.T. Trims Unicorn has been designed as a “Universal Corner” - its design allows this remarkable product to be installed as an internal or external corner profile.

The Unicorn provides a healthy, angled surface that permits easy cleaning and provides a square edge look, as apposed to a rounded surface, or no finish at all.

Its versatility allows it to be installed with thin mosaics and “built out” for use on thicker materials.

The B.A.T. Trims Internal Corner Trim has been designed to provide the perfect finish in instances where tiles or any other surface finish join at a 90° angle, horizontally or vertically.

The trims primary purpose is to create an area which is easy to clean. Tiles can be installed flush with the surface or tucked underneath the finishing lip, then finished with an appropriate silicone sealant.

	(Size)	A (mm)	B (mm)	C (mm)	D (mm)	E (mm)
UNI		5.00	11.50	11.50		
BIC	8	8.00	35.80	2.00	20.00	1.20
	10	10.00	39.80	2.00	20.00	1.20

Custom

Other Anodised and Powdercoated colours are also available and quoted on request.

(Colour)

Mill Finish

MF - Mill Finish

Anodised

BS - Bright Silver

MS - Matt Silver

Powdercoated

ALA - Alabaster

BK - Gloss Black

WH - Pearl White

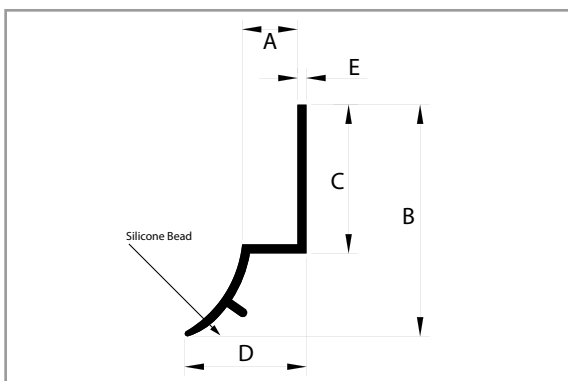
PLEASE NOTE: Care must be taken during and after installation of surface finished trims. Refer to pages 4 & 5 of this catalogue



ST-(Size)-3-(Colour)

Splash Trim

- Selected Colours Available (Refer Guide Below)
- 8 & 10mm
- 3.0m Length



The B.A.T. Trims Splash Trim is designed for use where one side of a 90° join is tiled. By creating a radius between a tiled wall and kitchen bench top, the Splash Trim creates a finish that is easily accessible for cleaning, which avoids creation of a 90° corner where household dust and grime can build up.

Alternatively, the Splash Trim can also be used in conjunction with both wall and floor tiles, such as a bath hob to tiled floor.

(Colour)

Mill Finish

MF - Mill Finish

Anodised

BS - Bright Silver

MS - Matt Silver

Powdercoated

ALA - Alabaster

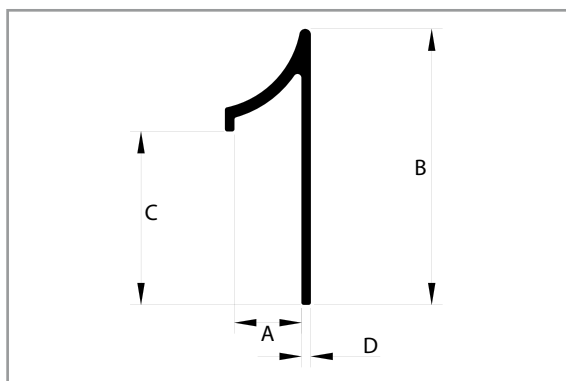
BK - Gloss Black

WH - Pearl White

BTT-(Size)-3-(Colour)

Top Trim

- Selected Colours Available (Refer Guide Below)
- 6, 8 & 10mm
- 3.0m Length



The B.A.T. Trim Top Trim allows for tiles of most thicknesses to be finished off with a concave finish that not only can hide an unsightly cut, but also aid in creating an area that can be cleaned by simply running a dish cloth along the concaved surface, as apposed to trying to clean a painted area with a wet cloth, which can prove to be a difficult task.

(Size)	A (mm)	B (mm)	C (mm)	D (mm)	E (mm)
--------	--------	--------	--------	--------	--------

ST	8	8.00	33.50	20.00	17.60	1.30
	10	10.00	33.50	20.00	19.60	1.30
BTT	6	6.50	35.00	22.00	1.20	
	8	8.50	35.00	22.00	1.20	
	10	10.50	35.00	22.00	1.20	

Custom

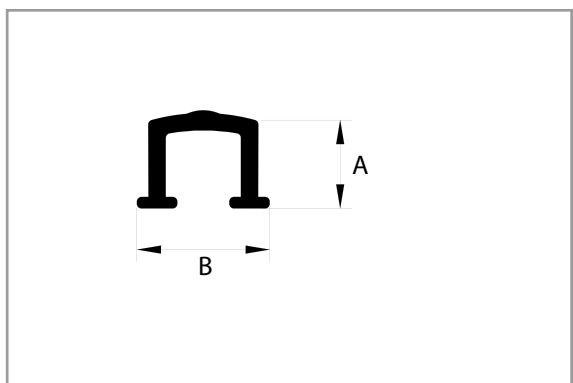
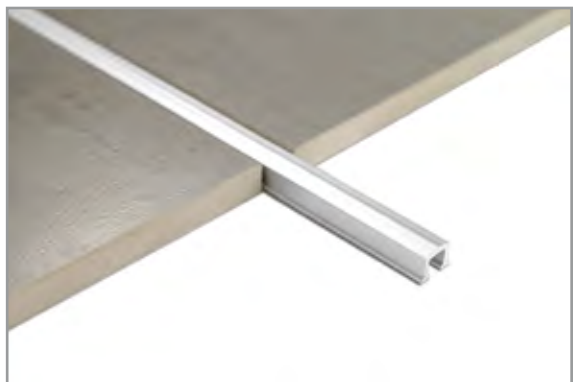
Other Anodised and Powdercoated colours are also available and quoted on request.

PLEASE NOTE: Care must be taken during and after installation of surface finished trims. Refer to pages 4 & 5 of this catalogue

BLT-8-(Colour)

Listello Trim - Aluminium

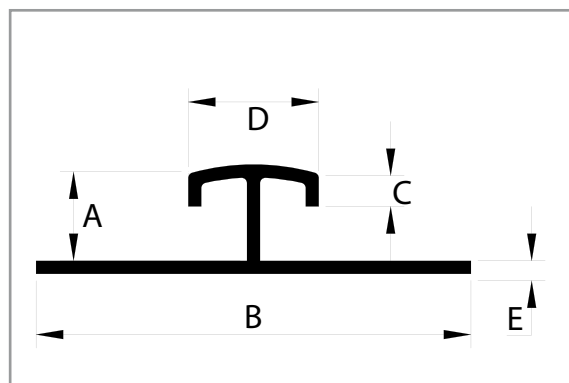
- Selected Colours Available (Refer Guide Below)
- 8mm
- 2.5m Length



BT-(Size)-3-(Colour)

Border Trim - Aluminium

- Selected Colours Available (Refer Guide Below)
- 8 & 10mm
- 3.0m Length



The B.A.T. Trims Listello Trim has been designed to allow a break in continuous rows of wall tiling.

The Listello Trim does not have fixing legs and can be raised and lowered to suit the tile.

It has a defined ridge running down the centre to give it a more aesthetically appealing appearance.

The B.A.T. Trims Border Trim is used as a decorative strip between wall tiles. It is an alternative to expensive ceramic border tiles and is commonly used in domestic and commercial applications.

Available in two sizes and the option to finish flush with the surface or tuck the tile under the lip allows for numerous installation options.

	(Size)	A (mm)	B (mm)	C (mm)	D (mm)	E (mm)
BLT		8.00	11.50			
BT	8	8.00	40.00	3.00	12.00	1.20
	10	10.00	40.00	3.00	12.00	1.20

Custom

Other Anodised and Powdercoated colours are also available and quoted on request.

(Colour)

Mill Finish

MF - Mill Finish

Anodised

BS - Bright Silver

MS - Matt Silver

Powdercoated

ALA - Alabaster

BK - Gloss Black

WH - Pearl White

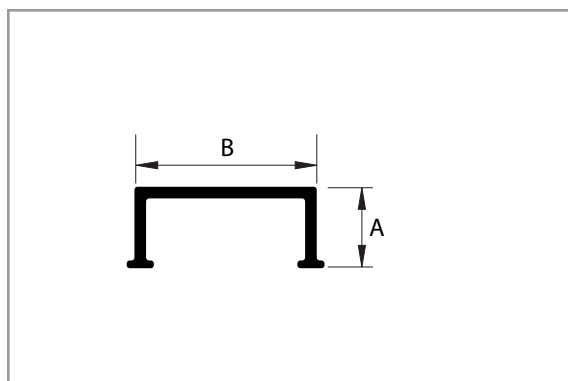
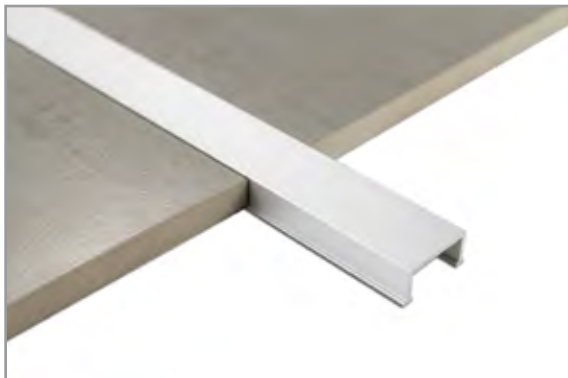
PLEASE NOTE: Care must be taken during and after installation of surface finished trims. Refer to pages 4 & 5 of this catalogue



DL25-(Size)-(Colour)

Décor Line - Aluminium

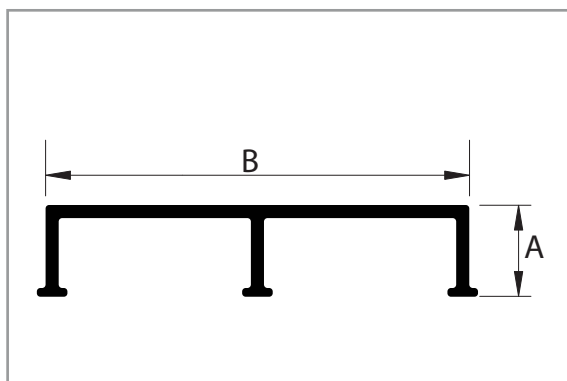
- Selected Colours Available (Refer Guide Below)
- 8 & 10mm
- 3.0m Length



DL50-(Size)-(Colour)

Décor Line - Aluminium

- Selected Colours Available (Refer Guide Below)
- 8 & 10mm
- 3.0m Length



The B.A.T. Trims Décor Line is yet another decorative trim that can be used to define different tiled finishes, colours, or to provide a simple break in otherwise continuous rows of tiling. The Décor Line is available in two standard widths and two standard heights.

(Colour)

Mill Finish

MF - Mill Finish

Anodised

BS - Bright Silver

MS - Matt Silver

Powdercoated

ALA - Alabaster

BK - Gloss Black

WH - Pearl White

	(Size)	A (mm)	B (mm)
DL25	8	8.50	23.50
	10	10.50	23.50
DL50	8	8.50	48.50
	10	10.50	48.50

Custom

Other Anodised and Powdercoated colours are also available and quoted on request.

PLEASE NOTE: Care must be taken during and after installation of surface finished trims. Refer to pages 4 & 5 of this catalogue



DSA-(Size)-3-MF

Double Sided Angle - Aluminium

- Mill Finish
- 3.0m Length

DSA-(Size)-3-MS

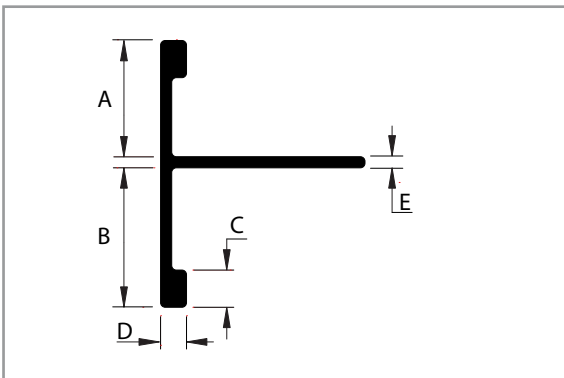
Double Sided Angle - Aluminium

- Matt Silver Anodised
- 3.0m Length

The B.A.T. Trims Double Sided Angle has been developed to provide a neat cover to end of tiles and / or the substrates.

With each size of the angle offering two different sizes to tile, the Double Sided Angle invariably offers eight different forms of application, depending on the installation scenario.

Whether it be in an instance where the end user is installing tile - over - tile, or alternatively tiling on a balcony where the face of the front needs to be covered, the Double Sided Angle offers a clean and simple solution.



(Size)	A (mm)	B (mm)	C (mm)	D (mm)	E (mm)
1012	10.00	12.50	4.00	2.80	1.20
1030	10.00	30.00	4.00	2.80	1.20
1215	12.50	15.00	4.00	2.80	1.20
1230	12.50	30.00	4.00	2.80	1.20

(Colour)
<u>Mill Finish</u>
MF - Mill Finish
<u>Anodised</u>
MS - Matt Silver

Custom

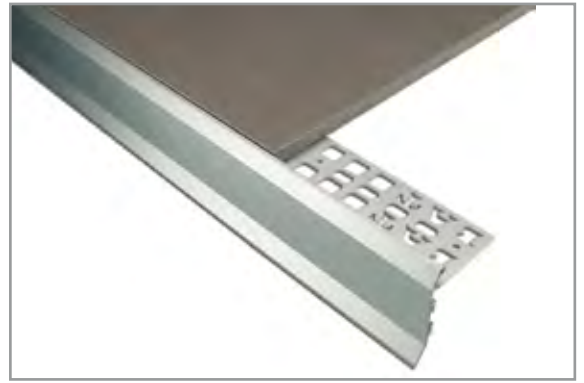
Other Anodised and Powdercoated colours are also available and quoted on request.

PLEASE NOTE: Care must be taken during and after installation of surface finished trims. Refer to pages 4 & 5 of this catalogue



BET-(Size)-3-MF**Balcony Trim - Aluminium**

- Mill Finish
- 3.0m Length

**BET-(Size)-3-MS****Balcony Trim - Aluminium**

- Matt Silver Anodised
- 3.0m Length

BETEC-(Size)-(Colour)**Balcony Trim - External Corner**

- Both Sizes & Colours Available
- Supplied with Joiners

**BETIC-(Size)-(Colour)****Balcony Trim - Internal Corner**

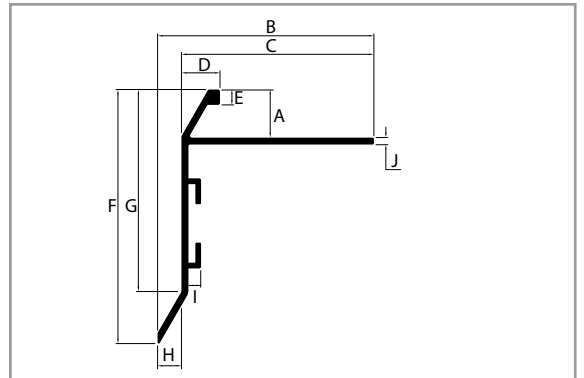
- Both Sizes & Colours Available
- Supplied with Joiners



B.A.T. Trims has developed a Balcony Trim to provide a practical and aesthetic finish for balconies.

This trim is available in two sizes, with the option of 90° internal and external corners and joiners.

Mill Finish and Matt Silver anodised finishes as standard. Other colours are available on request.



(Size)	A (mm)	B (mm)	C (mm)	D (mm)	E (mm)	F (mm)	G (mm)	H (mm)	I (mm)	J (mm)
10	10.00	56.20	50.00	8.60	4.00	63.52	50.00	6.20	3.30	1.80
12	12.50	56.20	50.00	10.00	4.00	66.02	52.50	6.20	3.30	1.80

Custom

Other Anodised and Powdercoated colours are also available and quoted on request.

(Colour)**Mill Finish**

MF - Mill Finish

Anodised

MS - Matt Silver

PLEASE NOTE: Care must be taken during and after installation of surface finished trims. Refer to pages 4 & 5 of this catalogue



ADT-(Size)-3-MF

Diminishing Trim - Aluminium

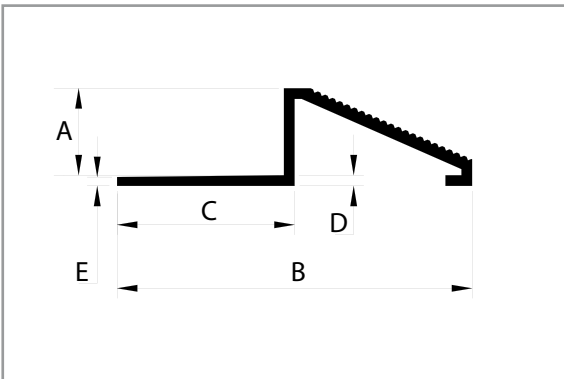
- Mill Finish
- 8, 10, 12 & 15mm
- 3.0m Length

ADT-(Size)-3-(Colour)

Diminishing Trim - Aluminium

- Standard Colours Available (Refer Guide Below)
- 8, 10, 12 & 15mm
- 3.0m Length

The B.A.T. Trims Diminishing Trim provides a ramped transition from one flooring surface to another. Its primary purpose is to eliminate possible trip hazards created when two different flooring types of unequal heights meet within a domestic or commercial installation.



(Colour)

Mill Finish

MF - Mill Finish

Anodised

MS - Matt Silver

(Size)

(Size)	A (mm)	B (mm)	C (mm)	D (mm)	E (mm)
8	8.00	40.00	20.00	1.20	1.00
10	10.00	40.00	20.00	1.20	1.00
12	12.50	45.00	20.00	1.20	1.00
15	15.00	50.00	20.00	1.20	1.00

Custom

Other Anodised and Powdercoated colours are also available and quoted on request.

PLEASE NOTE: Care must be taken during and after installation of surface finished trims. Refer to pages 4 & 5 of this catalogue



BDT-(Size)-3

Diminishing Trim - Brass

- Mill Finish
- 8, 10, 12 & 15mm
- 3.0m Length

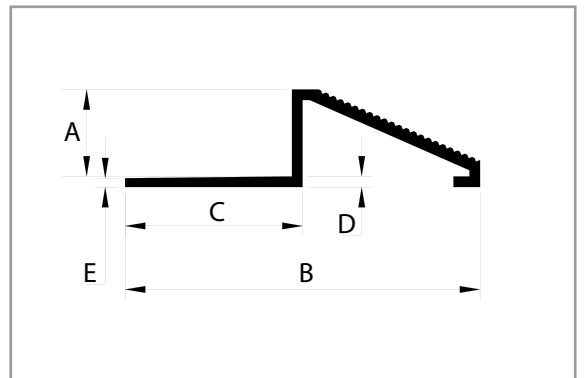
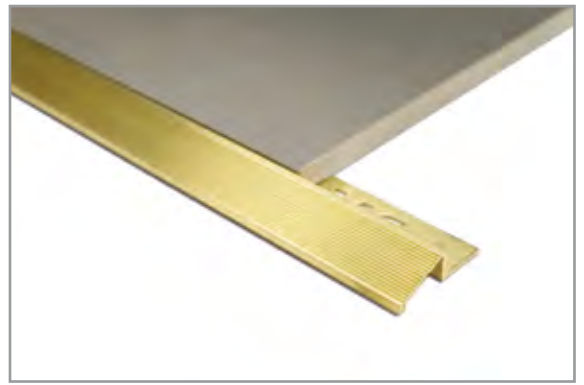
CPDT-(Size)-3

Diminishing Trim - Brass

- Chrome Plated
- 8, 10, 12 & 15mm
- 3.0m Length

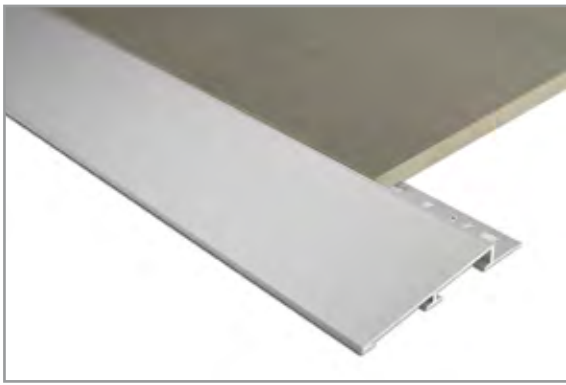
The B.A.T. Trims Diminishing Trim provides a ramped transition from one flooring surface to another. Its primary purpose is to eliminate possible trip hazards created when two different flooring types of unequal heights meet within a domestic or commercial installation.

When installing the Diminishing Trim externally, it is highly recommended that the Brass Diminishing Trim is used because of its improved resilience in harsh environments.



(Size)	A (mm)	B (mm)	C (mm)	D (mm)	E (mm)
8	8.00	40.00	20.00	1.50	1.00
10	10.00	40.00	20.00	1.50	1.00
12	12.50	45.00	20.00	1.50	1.00
15	15.00	50.00	20.00	1.50	1.00

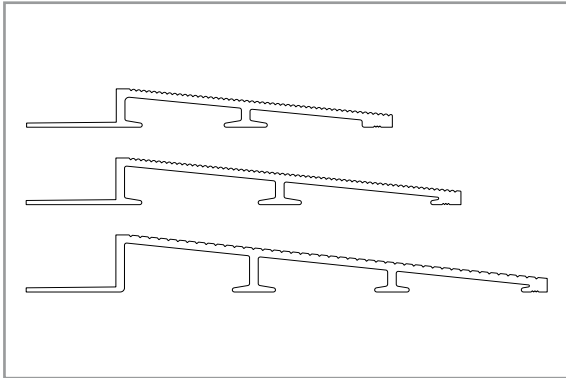
PLEASE NOTE: Care must be taken during and after installation of surface finished trims. Refer to pages 4 & 5 of this catalogue



ADTC-(Size)-3-MS

Commercial Diminishing Trim - Aluminium

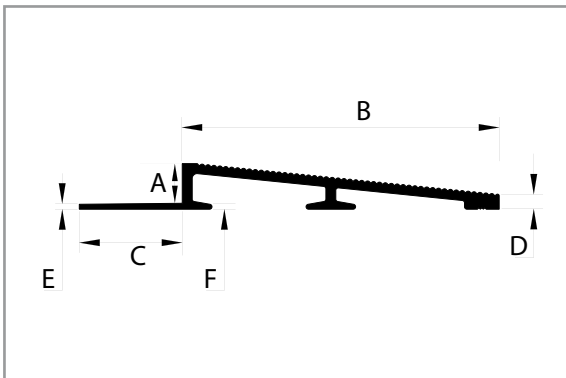
- Matt Silver
- 3.0m Length
- Complies with AS 1428.1 Design for Access and Mobility - Ramped Threshold



The B.A.T. Trims Commercial Diminishing Trim has been specifically developed to comply with the Australian Standards for Access and Mobility - Ramped Threshold.

It performs the same function as the standard diminishing trims, but the gradient is far lower which allows for an easier and safer transition between two surfaces.

It has primarily been designed for commercial applications, however, it can also be installed in domestic situations.



(Colour)

MS - Matt Silver

(Size)

(Size)	A (mm)	B (mm)	C (mm)	D (mm)	E (mm)	F (mm)
8	8.00	64.00	20.80	3.00	1.00	1.20
10	10.00	80.00	20.80	3.25	1.00	1.20
12	12.50	100.00	20.80	3.25	1.00	1.20

Custom

Other Anodised and Powdercoated colours are also available and quoted on request.

PLEASE NOTE: Care must be taken during and after installation of surface finished trims. Refer to pages 4 & 5 of this catalogue



BSN-(Size)-3-MF

Stair Nosing Trim - Aluminium

- Mill Finish
- 3.0m Length

BSN-(Size)-3-(Colour)

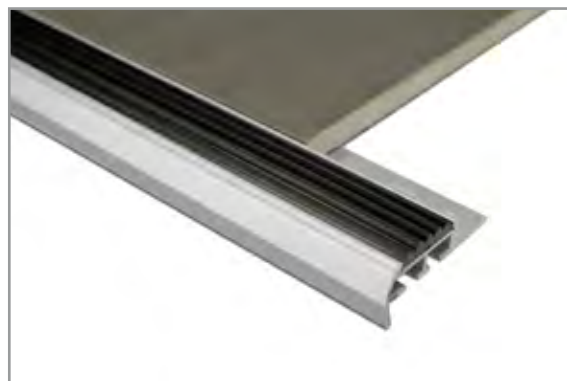
Stair Nosing Trim - Aluminium

- Standard Colours Available (Refer Guide Below)
- 3.0m Length

RSI-(Colour)

Stair Nosing Rubber Insert

- Standard Colours Available (Refer Guide Below)
- 3.0m Length

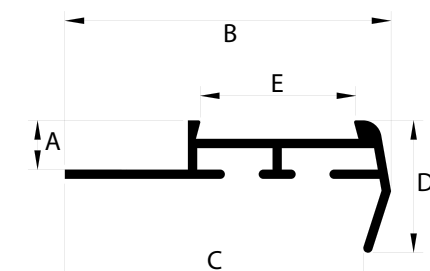


The B.A.T. Trims Stair Nosing Trim is tiled into place during the tile installation process.

Although maintaining a small and relatively unobtrusive appearance, the Stair Nosing Trim provides the necessary safety features by providing a non slip surface that can be walked upon, whilst providing an edge that protects the tile edges from damage.

The non-slip part of the Stair Nosing - the insert - is available in four standard colours to contrast the trim and or tile depending on the specific application requirements.

Stair Nosing Trim can be used both internally and externally



(Colour)

Mill Finish

MF - Mill Finish

Anodised

BS - Bright Silver

MS - Matt Silver

Powdercoated

ALA - Alabaster

BK - Gloss Black

WH - Pearl White

Rubber Insert

BE - Beige

BL - Black

BR - Brown

GR - Grey

(Size)

(Size)	A (mm)	B (mm)	C (mm)	D (mm)	E (mm)
8	8.00	53.00	48.50	21.50	25.00
10	10.00	53.00	48.50	21.50	25.00
12	12.50	53.00	48.50	21.50	25.00

Custom

Other Anodised and Powdercoated colours are also available and quoted on request.

PLEASE NOTE: Care must be taken during and after installation of surface finished trims. Refer to pages 4 & 5 of this catalogue



CT-(Size)-3-MF

Cove Trim - Aluminium

- Mill Finish
- 3.0m Length

CT-(Size)-3-(Colour)

Cove Trim - Aluminium

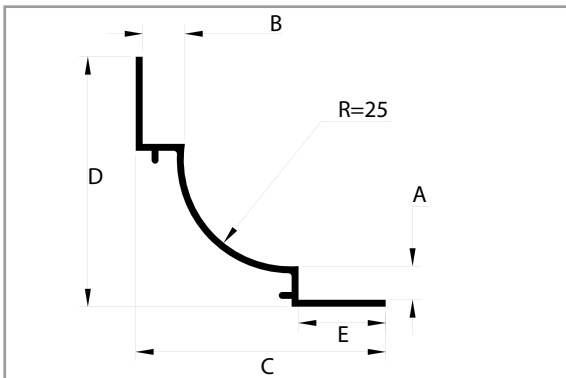
- Standard Colours Available (Refer Guide Below)
- 3.0m Length

The B.A.T. Trims Cove Trim has the core purpose to create a radius between wall and floor tiles that is easy to clean.

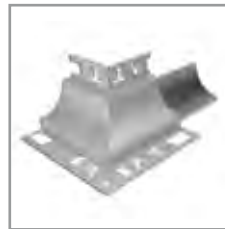
Designed in close consultation with Health Departments and Architects, the Cove Trims - when correctly installed, provides a sealed surface between wall and floors that is easily cleaned, thus eliminating dirt and dust and potential bacterial growth.

Available in six different size combinations, the Cove Trim will suit virtually any popular wall and floor tile thickness. Pre-fabricated corners, joiners and end caps are also readily available to compliment the Cove Trim, allowing for a trouble free and time efficient installation, that will provide an aesthetically appealing and hygienic coving system.

The Cove Trim is recommended for use in commercial kitchens, food preparation areas, and any installation where a hygienic finish between wall and floor is required.



Corners
Refer Page 38



End Caps
Refer Page 37

(Size)	A (mm)	B (mm)	C (mm)	D (mm)	E (mm)
88	8.00	8.00	56.60	56.60	20.50
108	10.00	8.00	58.60	58.60	20.50
1010	10.00	10.00	58.60	58.60	20.50
128	12.50	8.00	56.60	61.10	20.50
1210	12.50	10.00	58.60	61.10	20.50
1212	12.50	12.50	61.10	61.10	20.50

(Colour)
Mill Finish
MF - Mill Finish
Anodised
BS - Bright Silver
MS - Matt Silver
Powdercoated
ALA - Alabaster
BK - Gloss Black
WH - Pearl White

Custom

Other Anodised and Powdercoated colours are also available and quoted on request.

PLEASE NOTE: Care must be taken during and after installation of surface finished trims. Refer to pages 4 & 5 of this catalogue



APC60-3-MF

APC 60 Cove Trim - Aluminium

- Mill Finish
- 3.0m Length

APC60-3-(Colour)

APC 60 Cove Trim - Aluminium

- Standard Colours Available (Refer Guide Below)
- 3.0m Length



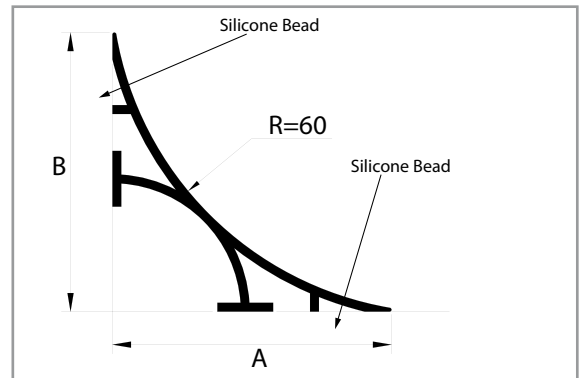
The B.A.T. Trims APC 60 Cove Trim has the core purpose to create a radius between wall and floor tiles that is easy to clean.

Designed in close consultation with Health Departments and Architects, the Cove Trims - when correctly installed, provides a sealed surface between wall and floors that is easily cleaned, thus eliminating dirt and dust and potential bacterial growth.

The APC 60 can be either be installed on top existing tile works, or under installations of materials such as vinyl where a radius finish is required without the obvious appearance of a Cove Trim.

The APC 60 is installed by applying a bead of silicone (as illustrated) and pressing the Cove Trim firmly into place to create a sealed surface.

Pre-fabricated corners, joiners and end caps are also available.



Corners

Refer Page 38



End Caps

Refer Page 37

(Colour)

Mill Finish

MF - Mill Finish

Anodised

BS - Bright Silver

MS - Matt Silver

Powdercoated

ALA - Alabaster

BK - Gloss Black

WH - Pearl White

(Size)

A (mm)

B (mm)

50.00

50.00

Custom

Other Anodised and Powdercoated colours are also available and quoted on request.

PLEASE NOTE: Care must be taken during and after installation of surface finished trims. Refer to pages 4 & 5 of this catalogue





APCOVCOM(Size)-MF

Cove Trim - Aluminium

- Mill Finish
- 3.0m Length

APCOVCOM(Size)-(Colour)

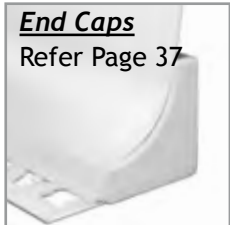
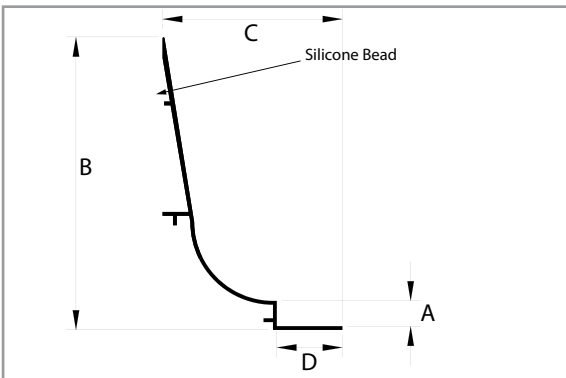
Cove Trim - Aluminium

- Standard Colours Available (Refer Guide Below)
- 3.0m Length

The B.A.T. Trims Cove Combo was designed as the name suggests to be a combination of the APC 60 and Cove Trims.

It was primarily designed for use where only one surface is being tiled.

Prefabricated corners and joiners are readily available to ensure a hassle free installation.



(Size)	A (mm)	B (mm)	C (mm)	D (mm)
8	8.00	96.20	57.00	20.80
10	10.00	96.20	57.00	20.80

(Colour)

Mill Finish

MF - Mill Finish

Anodised

BS - Bright Silver

MS - Matt Silver

Powdercoated

ALA - Alabaster

BK - Gloss Black

WH - Pearl White

Custom

Other Anodised and Powdercoated colours are also available and quoted on request.

PLEASE NOTE: Care must be taken during and after installation of surface finished trims. Refer to pages 4 & 5 of this catalogue



BTXP-(Size)-(Colour)

Batex - PVC Expansion Joint

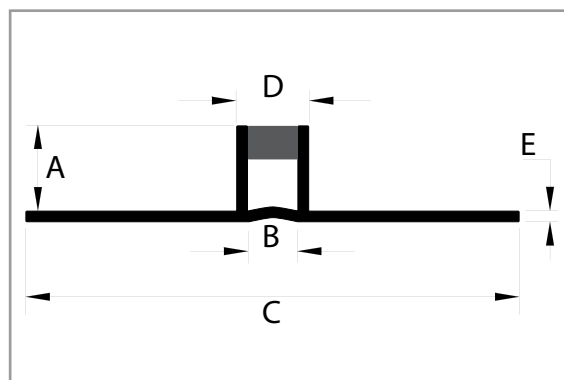
- Standard Colours Available (Refer Guide Below)
- 2.5m Length



The B.A.T. Trims BATEX PVC Expansion Joints are suitable for domestic use only. They can be used for both indoor and outdoor areas (i.e. balconies and facades etc.). As with all BATEX Expansion Joints, they are designed to expand or compress with thermal movements of the tiles. They are not designed to accomodate extreme substrate movement.

BATEX PVC Expansion Joints should be installed as per AS3958.1 - 2007 (5.4.5 Movement joints) at a distance between 3.0m and 5.0m depending on the tile material and size, the size of the tiled area and location (e.g. where higher temperature variations would occur)

BATEX PVC Expansion Joints do not require any special maintenance and are resistant to bacteria and fungus. Harsh Abrasives, hydrochloric and hydrofluoric acids should be avoided.



(Size)	A (mm)	B (mm)	C (mm)	D (mm)	E (mm)
88	8.00	6.00	57.00	8.00	1.00
108	10.00	6.00	57.00	8.00	1.00
128	12.00	6.00	57.00	8.00	1.00

(Colour)

- BK - Black
- GR - Grey
- WH - White

PLEASE NOTE: Care must be taken during and after installation of surface finished trims. Refer to pages 4 & 5 of this catalogue



BTXA-(Size)-3-(Colour)

BATEX - Aluminium Expansion Joint

- Mill Finish Aluminium
- Standard Colours of Neoprene (Refer Guide Below)
- 3.0m Length

The BATEX Expansion Joints are manufactured from three individual components - Angle, Neoprene Infill and Adhesive.

BATEX Expansion Joints are designed for thin-bed adhesive installations where the adhesive is able to penetrate the perforated fixing legs to hold them in place.

Each of the components have their own characteristics, which combined with an extensive manufacturing process, produce an Expansion Joint which minimises the risk of damage to tiles caused by thermal expansion and contraction.

BATEX is manufactured in three metals as well as three Neoprene colours. Product dimensions vary according to the materials used (as per diagram).

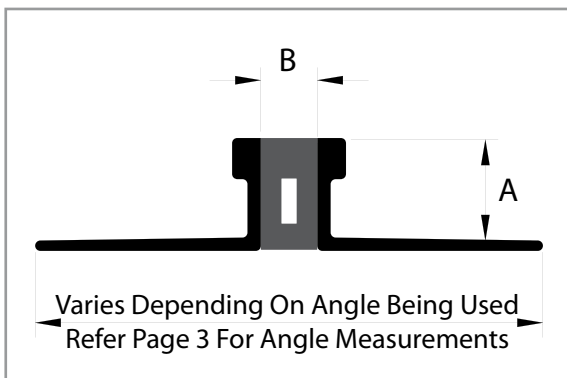
During manufacturing, much care is taken to ensure proper adhesion between the metal and the Neoprene. In order to achieve a high tear resistance, the Angles and the Neoprene are mechanically and chemically prepared before the specially formulated adhesive is applied.

After both materials are solidly bonded, the Expansion Joint is machined on the bottom to provide a flat and smooth surface, and more importantly on the top, to provide a level finish between the Angle and the Neoprene.

BATEX Aluminium Expansion Joints have been commonly used in numerous high profile projects, and can be manufactured as a straight length, or made to specification (i.e: Radial, Single Sided or Multiple Neoprene Adhesion.)

BATEX Expansion Joint

IMPORTANT NOTE:
Neoprene can discolour under high UV exposure and constant foot traffic.
This will in no way alter the performance of the product.
Discolouration can be minimised through regular cleaning and maintenance.



(Size)	A (mm)	B (mm)
86	8.00	6.00
96	9.00	6.00
106	10.00	6.00
116	11.00	6.00
126	12.50	6.00
136	13.50	6.00
156	15.00	6.00
176	17.00	6.00
186	18.50	6.00
206	20.00	6.00
226	22.00	6.00

6mm Neoprene

(Size)	A (mm)	B (mm)
810	8.00	10.00
910	9.00	10.00
1010	10.00	10.00
1110	11.00	10.00
1210	12.50	10.00
1310	13.50	10.00
1510	15.00	10.00
1710	17.00	10.00
1810	18.50	10.00
2010	20.00	10.00
2210	22.00	10.00

10mm Neoprene

(Colour)
Neoprene
BE - Beige
BL - Black
GR - Grey

Custom
Other Sizes and Variations are also available and quoted on request.

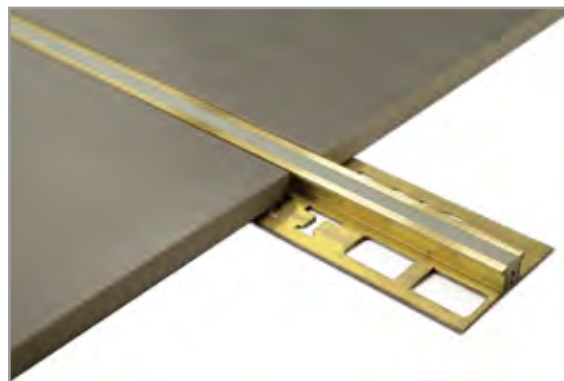
PLEASE NOTE: Care must be taken during and after installation of surface finished trims. Refer to pages 4 & 5 of this catalogue



BTXB-(Size)-3-(Colour)

BATEX - Brass Expansion Joint

- Mill Finish Brass
- Standard Colours of Neoprene (Refer Guide Below)
- 3.0m Length



The BATEX Expansion Joints are manufactured from three individual components - Angle, Neoprene Infill and Adhesive.

BATEX Expansion Joints are designed for thin-bed adhesive installations where the adhesive is able to penetrate the perforated fixing legs to hold them in place.


Each of the components have their own characteristics, which combined with an extensive manufacturing process, produce an Expansion Joint which minimises the risk of damage to tiles caused by thermal expansion and contraction.

BATEX is manufactured in three metals as well as three Neoprene colours. Product dimensions vary according to the materials used (as per diagram).

During manufacturing, much care is taken to ensure proper adhesion between the metal and the Neoprene. In order to achieve a high tear resistance, the Angles and the Neoprene are mechanically and chemically prepared before the specially formulated adhesive is applied.

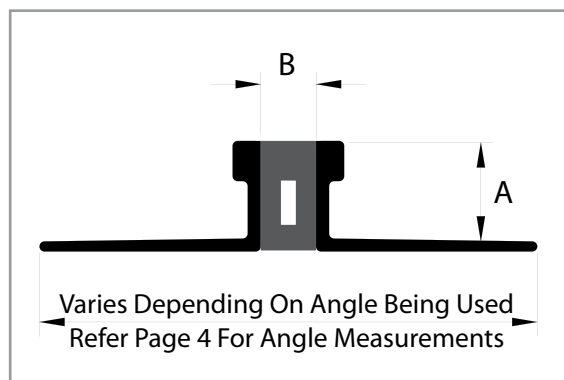
After both materials are solidly bonded, the Expansion Joint is machined on the bottom to provide a flat and smooth surface, and more importantly on the top, to provide a level finish between the Angle and the Neoprene.

BATEX Brass Expansion Joints have been commonly used in numerous high profile projects, and can be manufactured as a straight length, or made to specification (i.e: Radial, Single Sided or Multiple Neoprene Adhesion.) Brass is commonly known for its hard wearing properties and longevity.



BATEX Expansion Joint

IMPORTANT NOTE:
Neoprene can discolour under high UV exposure and constant foot traffic.
This will in no way alter the performance of the product.
Discolouration can be minimised through regular cleaning and maintenance.



(Colour)
Neoprene
BE - Beige
BL - Black
GR - Grey

Custom
Other Sizes and Variations are also available and quoted on request.

	(Size)	A (mm)	B (mm)
6mm Neoprene	86	8.00	6.00
	96	9.00	6.00
	106	10.00	6.00
	116	11.00	6.00
	126	12.50	6.00
	136	13.50	6.00
	156	15.00	6.00
	186	18.50	6.00
	206	20.00	6.00
	226	22.00	6.00

	(Size)	A (mm)	B (mm)
10mm Neoprene	810	8.00	10.00
	910	9.00	10.00
	1010	10.00	10.00
	1110	11.00	10.00
	1210	12.50	10.00
	1310	13.50	10.00
	1510	15.00	10.00
	1810	18.50	10.00
	2010	20.00	10.00
	2210	22.00	10.00

PLEASE NOTE: Care must be taken during and after installation of surface finished trims. Refer to pages 4 & 5 of this catalogue





BTXS-(Size)-3-(Colour)

BATEX - Stainless Steel Expansion Joint

- Mill Finish Stainless Steel
- Standard Colours of Neoprene (Refer Guide Below)
- 3.0m Length

The BATEX Expansion Joints are manufactured from three individual components - Angle, Neoprene Infill and Adhesive.

BATEX Expansion Joints are designed for thin-bed adhesive installations where the adhesive is able to penetrate the perforated fixing legs to hold them in place.

Each of the components have their own characteristics, which combined with an extensive manufacturing process, produce an Expansion Joint which minimises the risk of damage to tiles caused by thermal expansion and contraction.

BATEX is manufactured in three metals as well as three Neoprene colours. Product dimensions vary according to the materials used (as per diagram).

During manufacturing, much care is taken to ensure proper adhesion between the metal and the Neoprene. In order to achieve a high tear resistance, the Angles and the Neoprene are mechanically and chemically prepared before the specially formulated adhesive is applied.

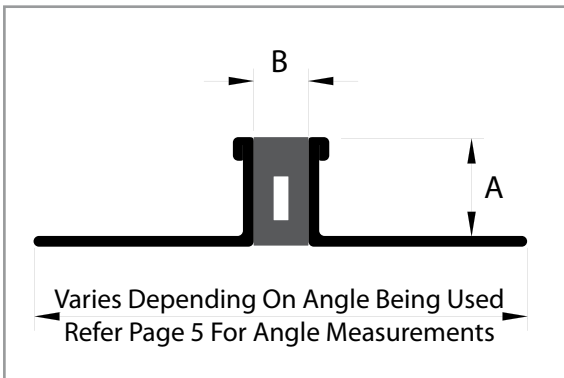
After both materials are solidly bonded, the Expansion Joint is machined on the bottom to provide a flat and smooth surface, and more importantly on the top, to provide a level finish between the Angle and the Neoprene.

BATEX Stainless Steel Expansion Joints have been commonly used in numerous high profile projects, and can be manufactured as a straight length, or made to specification (i.e: Radial or Single Sided). Stainless Steel is commonly known for its high resistance to the elements and performance in wet weather / area scenarios.

As there are various grades of Stainless Steel, when considering the use of Stainless Steel please contact us first to determine if the installation would be suitable.

BATEX Expansion Joint

IMPORTANT NOTE:
Neoprene can discolour under high UV exposure and constant foot traffic.
This will in no way alter the performance of the product.
Discolouration can be minimised through regular cleaning and maintenance.



(Size)	A (mm)	B (mm)
86	8.00	6.00
106	10.00	6.00
126	12.50	6.00
156	15.00	6.00
186	18.50	6.00
226	22.00	6.00

6mm Neoprene

(Size)	A (mm)	B (mm)
810	8.00	10.00
1010	10.00	10.00
1210	12.50	10.00
1510	15.00	10.00
1810	18.50	10.00
2210	22.00	10.00

10mm Neoprene

(Colour)
Neoprene
BE - Beige
BL - Black
GR - Grey

Custom
Other Sizes and Variations are also available and quoted on request.

Note:

Grade 304 - Available in all Sizes Listed Above

Grade 316 - Available in 8, 10 & 12mm Heights Only

PLEASE NOTE: Care must be taken during and after installation of surface finished trims. Refer to pages 4 & 5 of this catalogue



MLSTA-(Size)-(Colour)

Mortarloc - Aluminium Expansion Joint

- Mill Finish Aluminium
- Standard Colours of Neoprene (Refer Guide Below)
- 1.8m Length

MLSTB-(Size)-(Colour)

Mortarloc - Brass Expansion Joint

- Mill Finish Brass
- Standard Colours of Neoprene (Refer Guide Below)
- 1.8m Length

MLSTSS-(Size)-(Colour)

Mortarloc - Stainless Steel Expansion Joint


- Mill Finish Stainless Steel
- Standard Colours of Neoprene (Refer Guide Below)
- 1.8m Length

MLSTZ-(Size)-(Colour)

Mortarloc - Zinc Expansion Joint

- Mill Finish Zinc
- Standard Colours of Neoprene (Refer Guide Below)
- 1.8m Length





BATEX Expansion Joint

IMPORTANT NOTE:
Neoprene can discolour under high UV exposure and constant foot traffic.
This will in no way alter the performance of the product.
Discolouration can be minimised through regular cleaning and maintenance.

Mortaloc Expansion Joints are designed for thick-bed (mortar style) installations as opposed to thin-bed installations where BateX is primarily used.

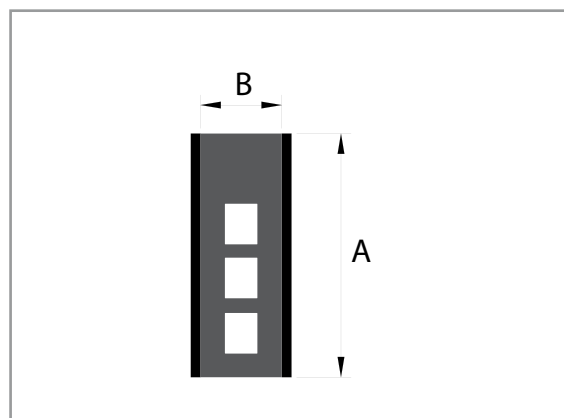
Mortarloc is manufactured utilising two side plates, generally 1.2mm in thickness, sandwiching a Neoprene infill in between.

The thickness of the side plates is normally determined by the metal being used, and the subsequent installation surrounds the scenario. Thicker or thinner side plates can be used on request.

Mortarloc is manufactured in four standard metals; Aluminium, Brass, Stainless Steel, and Zinc.

One of the major reasons for movement is temperature fluctuation caused by either seasonal change, failure or disconnection of airconditioning systems within closed buildings or sudden downpours in tropical locations. All of which may result in thermal expansion or contraction between 0.003mm and 0.008mm per metre per degree centigrade temperature fluctuation. For basic calculations, an average factor of 0.006mm per metre per degrees centigrade is acceptable.

Mortarloc can be custom made to specification i.e. radial, single sided or multiple neoprene adhesion.



(Colour)	(Size)	A (mm)	B (mm)
Neoprene BE - Beige BL - Black GR - Grey	256	25.00	6.00
	306	30.00	6.00
	406	40.00	6.00
	506	50.00	6.00
Custom Other Sizes and Variations are also available and quoted on request.	2510	25.00	10.00
	3010	30.00	10.00
	4010	40.00	10.00
	5010	50.00	10.00

Example	
Temperature During Installation	25° C
Expected Temperature Rise	25° C (to 50° C)
Approximate Available Expansion on Mortarloc with 6mm neoprene	0.6mm
0.006mm/m° C x 25° C = 0.15mm/m Expansion per lineal metre	
Available Expansion	$\frac{0.6\text{mm}}{0.15\text{mm/m}} = 4\text{m}$ (Distance Between Expansion per Metre expansion joints)

PLEASE NOTE: Care must be taken during and after installation of surface finished trims. Refer to pages 4 & 5 of this catalogue



Metals

Aluminium	Alloy 6060
Brass	Alloy 380/F
Stainless Steel	Grade 304/316
Zinc	

Neoprene

Hardness ASTM D2240 - Shore A	55
Tensile Strength ATSM D412	10 MPA
Elongation at Break	600%
Tear Resistance ASTM D624	28 kN/m
Temperature Range	-30°C to +110°C
Acid Resistance - Concentrated	Good
Acid Resistance - Diluted	Excellent
Solvent Resistance - Hydrocarbons	Good
Solvent Resistance - Oxygenated	Fair
Oil & Gasoline	Excellent
Animal & Vegetable Oils	Good
Chlorine	Fair
Citric Acids	Excellent

Adhesive

Softening Point	165°C
Normal Operating Temp Range	-60°C to + 180°C
Tensile Shear Strength	15-20 N/mm ²
Humidity Resistance	High

Note:

BATEX and Mortarloc Expansion Joints are not mechanical movement joints and should only be installed where limited movement within the floor covering is expected.

Neoprene is universally recognised as having excellent resistance to deterioration from ozone and weathering, as well as high physical strength. Neoprene can discolour under high UV exposure.

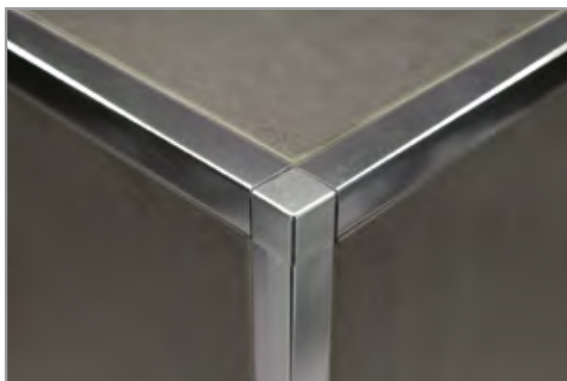
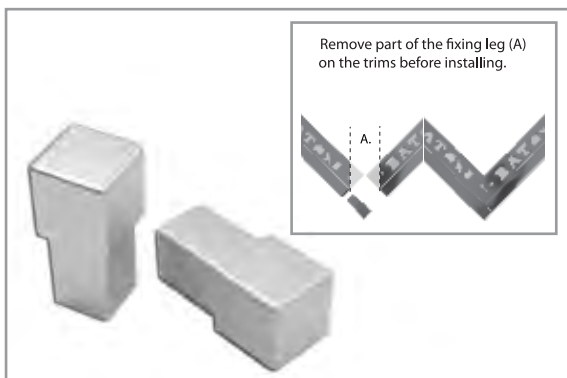
PLEASE NOTE: Care must be taken during and after installation of surface finished trims. Refer to pages 4 & 5 of this catalogue



MCPC-(Size)-(Colour)

Corners - Suit MCA & MCG

- Selected Colours Available (Refer Guide Below)
- Refer Page 12 & 14 For Trims



(Size)	Use With Trim (Page 13 & 15)
8	MCA-8 & MCG-8
10	MCA-10 & MCG-10
12	MCA-12 & MCG-12

(Colour)
Anodised
BS - Bright Silver
MS - Matt Silver
Powdercoated
WH - Pearl White

Custom

Other Anodised and Powdercoated colours are also available and quoted on request.

CTCAP-(Size)-(Colour)

End Cap - Suit Cove Trim & Cove Combo

- Plastic
- Available In Light Grey or White
- Left & Right End Caps For Uneven Cove (i.e. 10x8)
- Pack of 10



Example:
Cove Trim 10 x 8

End Cap Installed On Right Hand End Of Trim

CTCAP-108R-10-GREY



Example:
Cove Combo Trim 10 x 8

End Cap Installed On Right Hand End Of Trim

CTCAP-108R-10-GREY

APC60CAP-10-(Colour)

End Cap - Suit APC60 Cove Trim

- Plastic
- Available In Light Grey or White
- Universal Fit to Left or Right Hand Ends
- Pack of 10



Example:
APC60 Cove Trim

End Cap Installed On Right Hand End Of Trim

APC60CAP-10-GREY

PLEASE NOTE: Care must be taken during and after installation of surface finished trims. Refer to pages 4 & 5 of this catalogue

CTIC-(Size)-(Colour)

Corner - Internal Corner - Suit Cove Trim

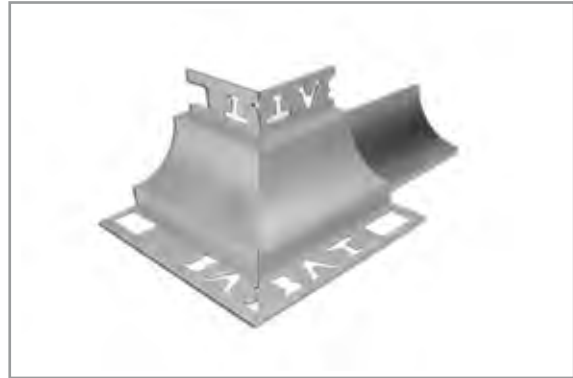
- Refer Page 25 For Trims, Colour & Size Selection



CTEC-(Size)-(Colour)

Corner - External Corner - Suit Cove Trim

- Refer Page 25 For Trims, Colour & Size Selection



APC60-IC-(Colour)

Corner - Internal Corner - Suit APC60 Cove Trim

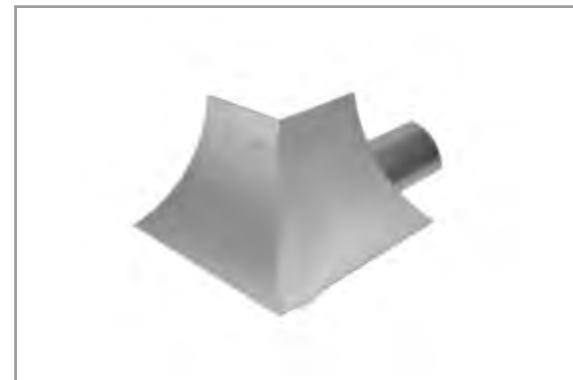
- Refer Page 25 For Trims, Colour & Size Selection



APC60-EC-(Colour)

Corner - External Corner - Suit APC60 Cove Trim

- Refer Page 25 For Trims, Colour & Size Selection



APCOVIC-(Size)-(Colour)

Corner - Internal Corner - Suit Cove Combo Trim

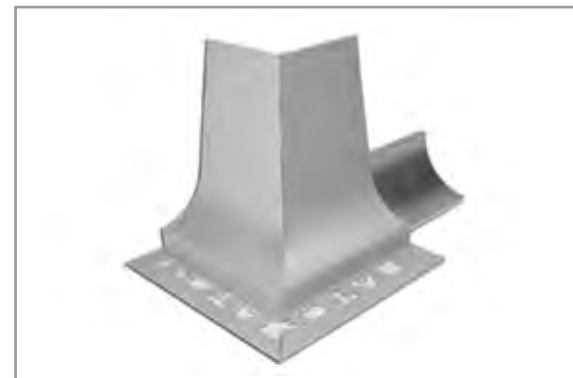
- Refer Page 25 For Trims, Colour & Size Selection



APCOVEC-(Size)-(Colour)

Corner - External Corner - Suit Cove Combo Trim

- Refer Page 25 For Trims, Colour & Size Selection



PLEASE NOTE: Care must be taken during and after installation of surface finished trims. Refer to pages 4 & 5 of this catalogue



Whilst every effort is made to ensure its accuracy, the information in this catalogue is not binding and is subject to alteration. Please contact us for further information.

Printed April 2015

PLEASE NOTE: Care must be taken during and after installation of surface finished trims. Refer to pages 4 & 5 of this catalogue



B.A.T. TRIMS PTY. LTD.

email: sales@battrims.com
website: www.battrims.com
Melbourne: 03 9797 7900

Brisbane: 07 3482 2175
Sydney: 02 9721 2275
Perth: 08 9303 9827
Adelaide: 08 8345 1248
Albury: 02 6025 1855
Townsville: 07 4775 6956